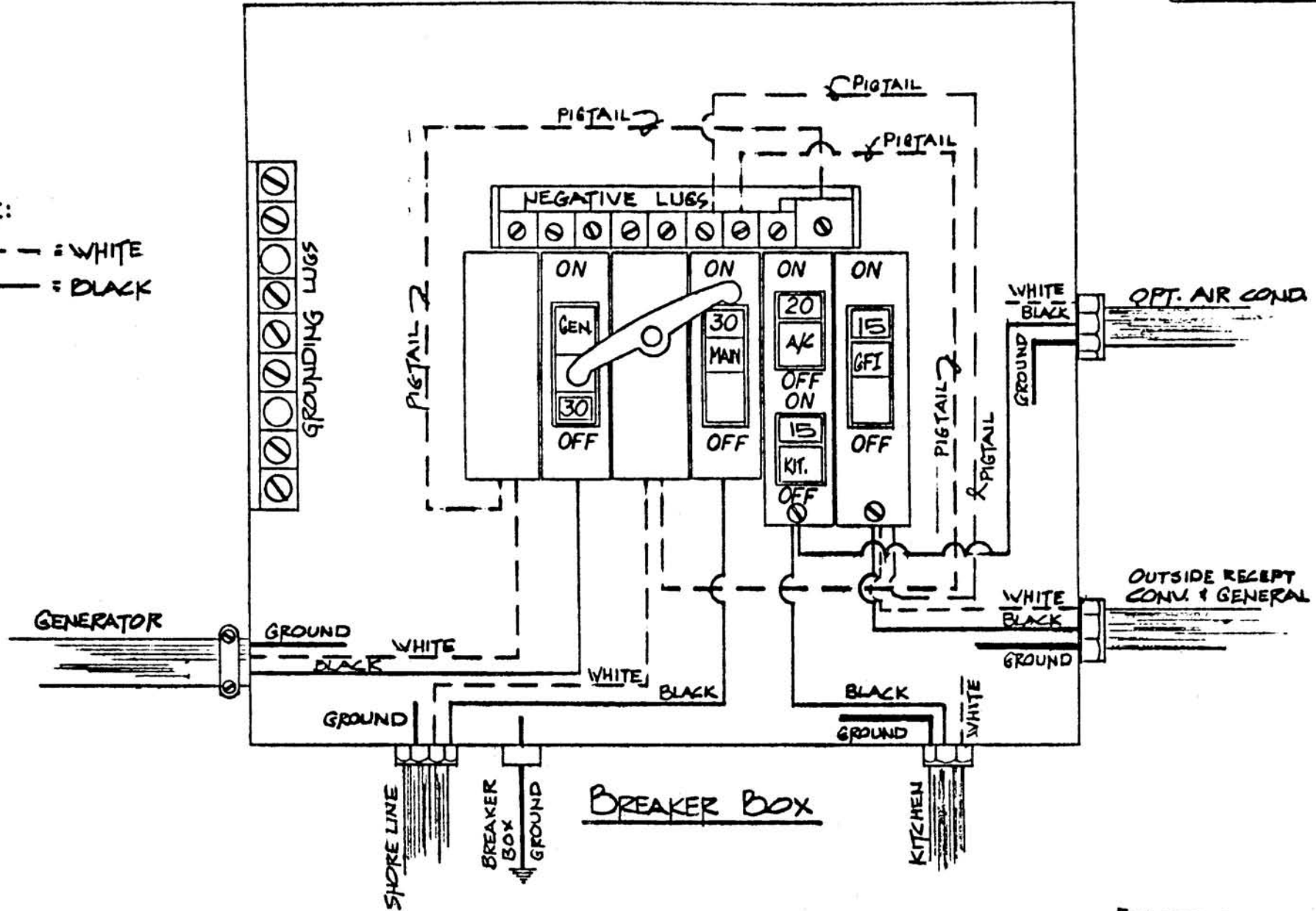


NOTE:

----- = WHITE
 _____ = BLACK

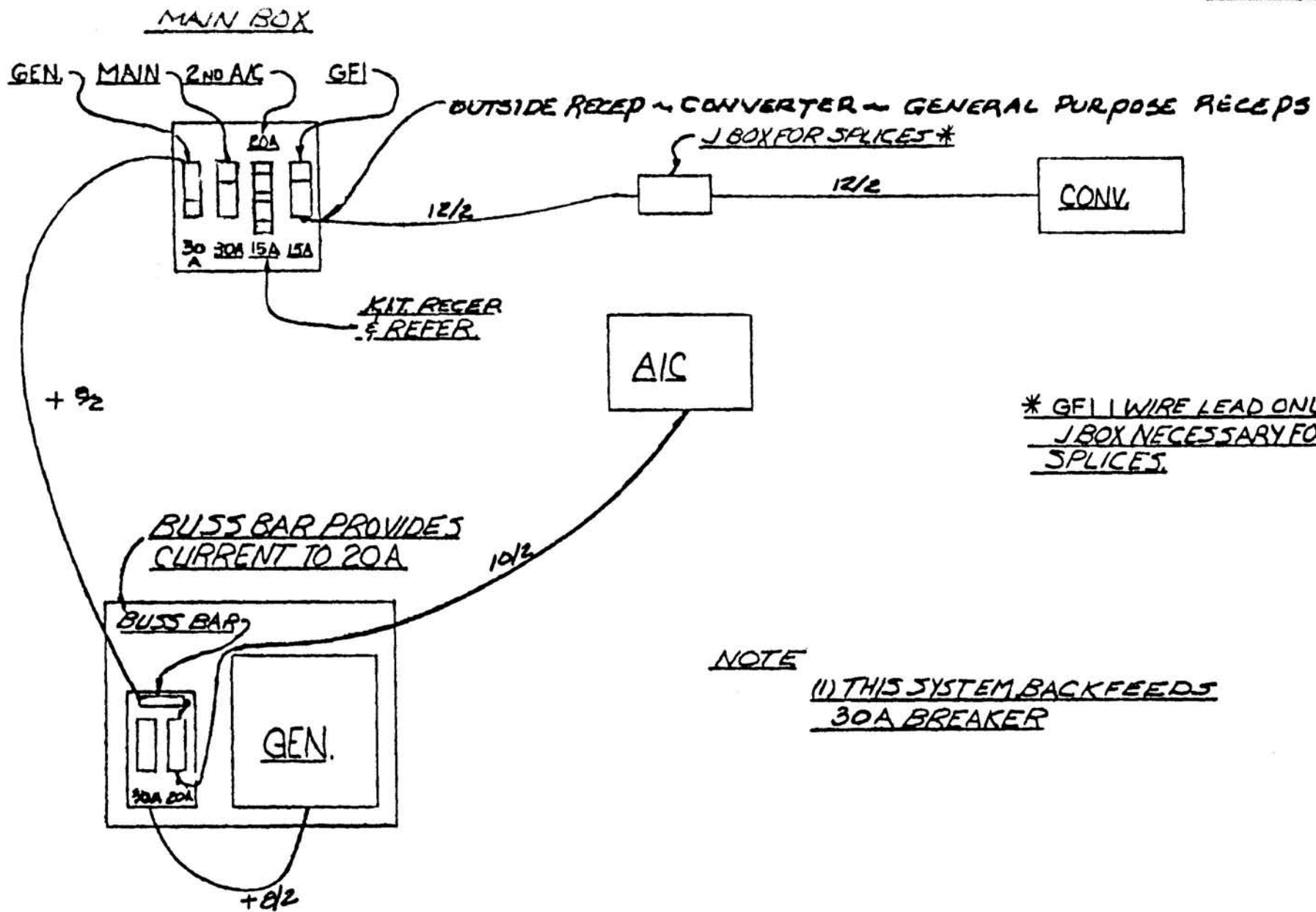


ELECTRICAL

COACHMEN INDUSTRIES, INC.

					MODEL	ALL TRANSMODE MODELS	DATE	3-8-76	DWG. NO.	J-EL-274
					SUBJECT	A BREAKER BOX WIRING	SCALE	NO SCALE	SHEET	DWG BY
									OF 1	GRIFIN

SYM	REVISIONS	CHANGE NO.	DATE	BY	SER. NO.	THRU	APP. BY
-----	-----------	------------	------	----	----------	------	---------



NOTE

(1) THIS SYSTEM BACKFEEDS 30A BREAKER

* GEI | WIRE LEAD ONLY - J BOX NECESSARY FOR SPLICES.

ELECTRIC

COACHMEN INDUSTRIES, INC.

26RB
MODEL 265B TRANS MODE

DATE
12-6-75

DWG. NO.
J-EL-174

SUBJECT BREAKER BOX
HOOKUP FOR OPT. 2ND A/C.

SCALE
NONE

SHEET /
of 1
DWG BY
R. SARASON

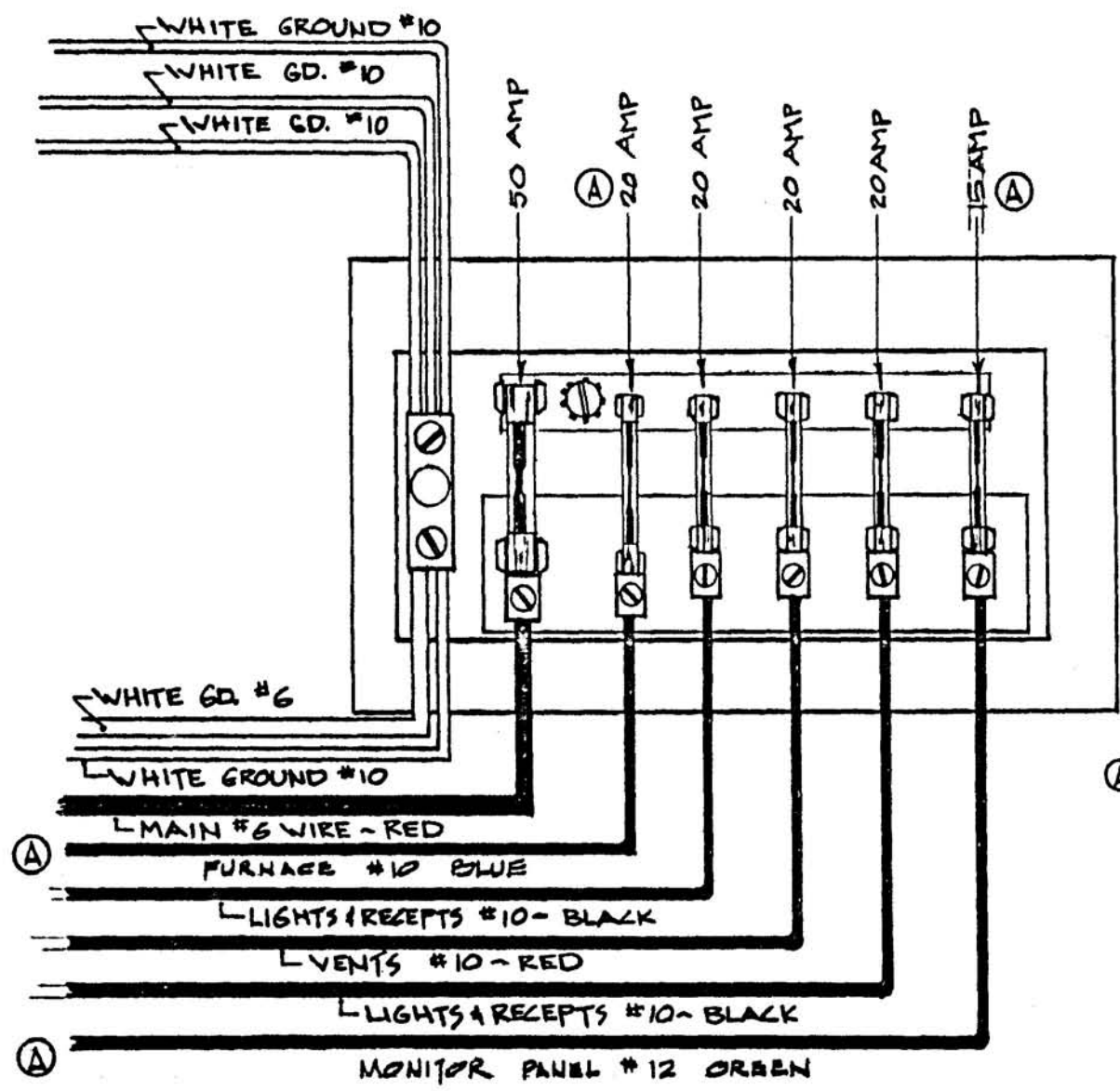
STM

REVISIONS

CHANGE NO. DATE BY

SER. NO.

THRU.

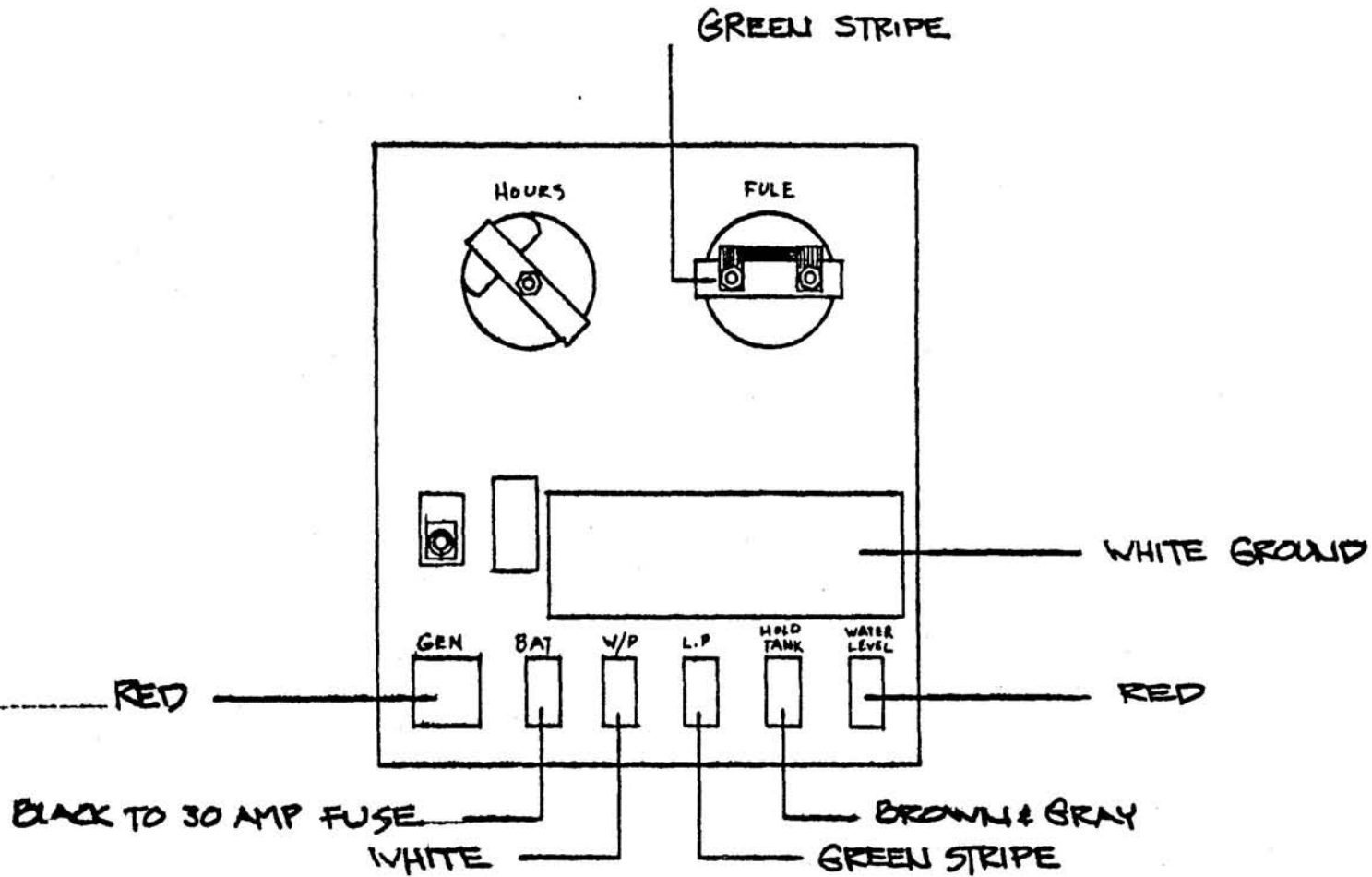


Ⓐ NOTE:
 TRIAD-UTRAD FUSE BLOCK
 NUMBER 60-5220-15

ELECTRICAL

COACHMEN INDUSTRIES, INC.

				MODEL	ALL TRANSMODES	DATE	5-17-76	DWG. NO.	J-EL-402-A
				SUBJECT	DISTRIBUTION BOX	SCALE	—	SHEET 1	DWG BY
								OF 1	GRIFFIN
SYN	REVISIONS	CHANGE NO.	DATE	BY	SER. NO.				
A.	REV. FURN & MONITOR PAN. HMK-UPS		4-6-77	JVS.					



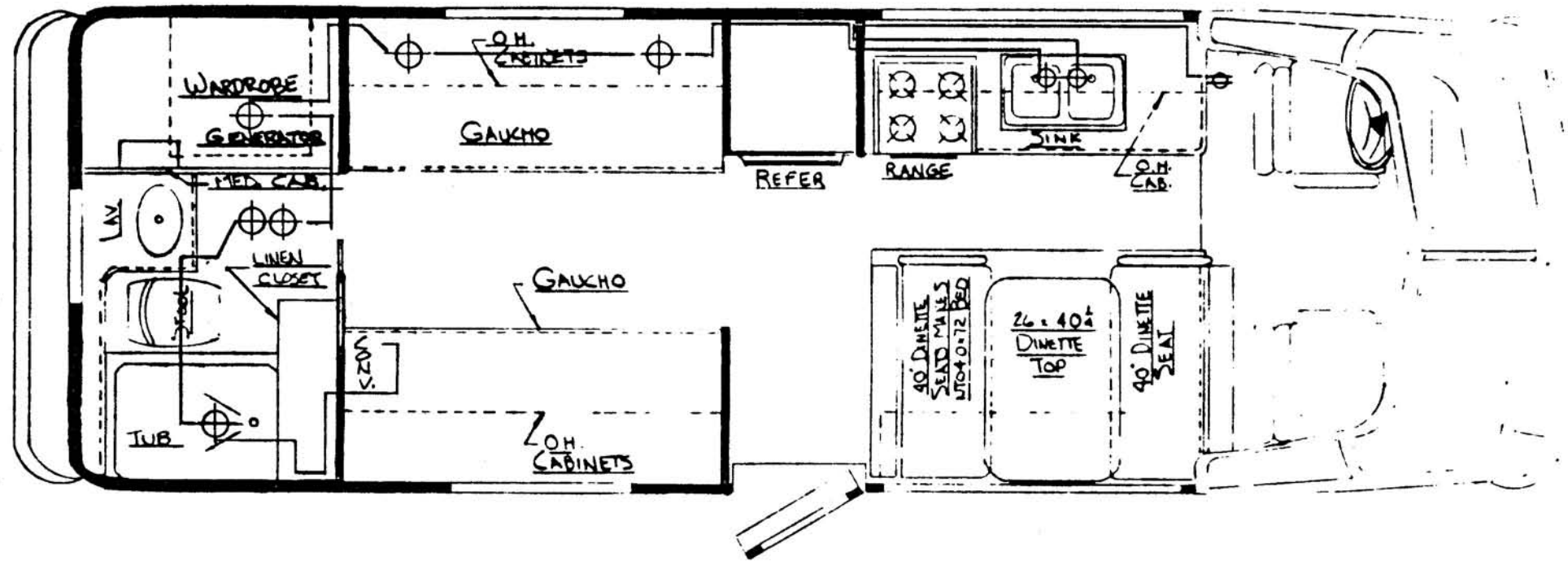
ELECTRICAL

COACHMEN INDUSTRIES, INC.

MODEL	ALL TRANSMODES	DATE	10-13-76	DWG. NO.	J-EL 756
SUBJECT	MONITOR PANEL WIRE	SCALE		SHEET	1
				OF	1
				DWG BY	GRIFFIN

PTM	REVISIONS	CHANGE NO.	DATE	BY	SER. NO.	THRU.	APPD. BY
-----	-----------	------------	------	----	----------	-------	----------

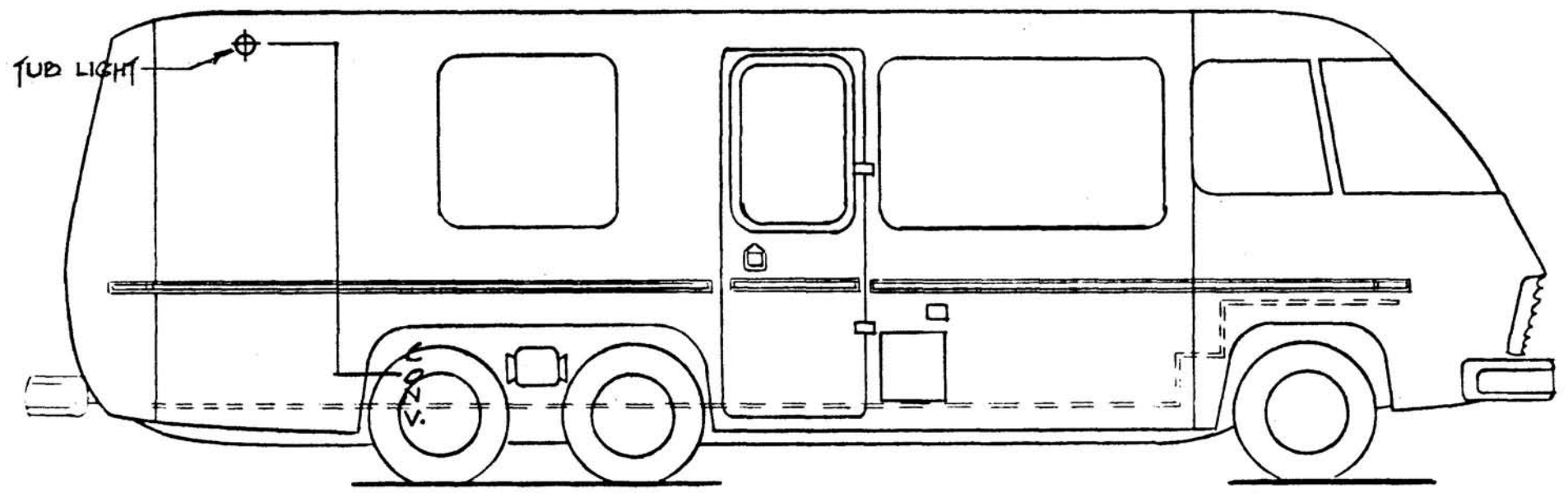
CIRCUIT #2 LIGHTS & RECEPTS - BLACK
 AMP LOAD
 1.4 PER 12V BULB.



ELECTRICAL 12V.

COACHMEN INDUSTRIES, INC.

					COACHMEN INDUSTRIES, INC.					
					MODEL	26' RB TRANSMODE	DATE	3/1/76	DWG. NO.	J-EL-254
					SUBJECT	12V. CIRCUIT #2	SCALE	NO SCALE	SHEET	DWG BY
									OF	GRIFFIN
SYM	REVISIONS				CHANGE NO.	DATE	BY	SER. NO.	THRU	APPD. BY



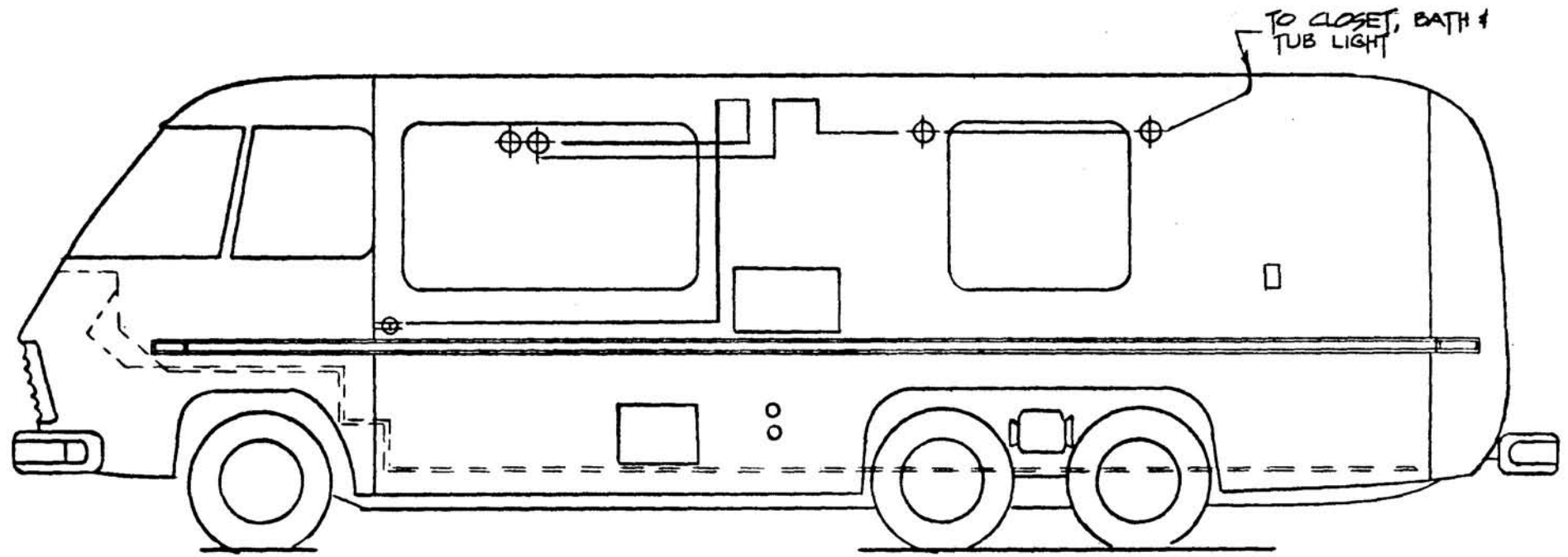
CIRCUIT #2 LIGHT & RECEPT - BLACK
AMP LOADS
1.4 PER 12V BULB

ELECTRICAL 12V.

COACHMEN INDUSTRIES, INC.

MODEL	26' RB TRANSMODE	DATE	3/1/76	DWG. NO.	J-EL-255
SUBJECT	12V. CIRCUIT #2	SCALE	NO SCALE	SHEET OF	DWG BY GRIFFIN

CHANGE NO.	DATE	BY	SER. NO.	THRU	APPD. BY



CIRCUIT #2 - LIGHT & RECEP.TS - BLACK
 AMP LOADS
 1.4 PER 12V BULB

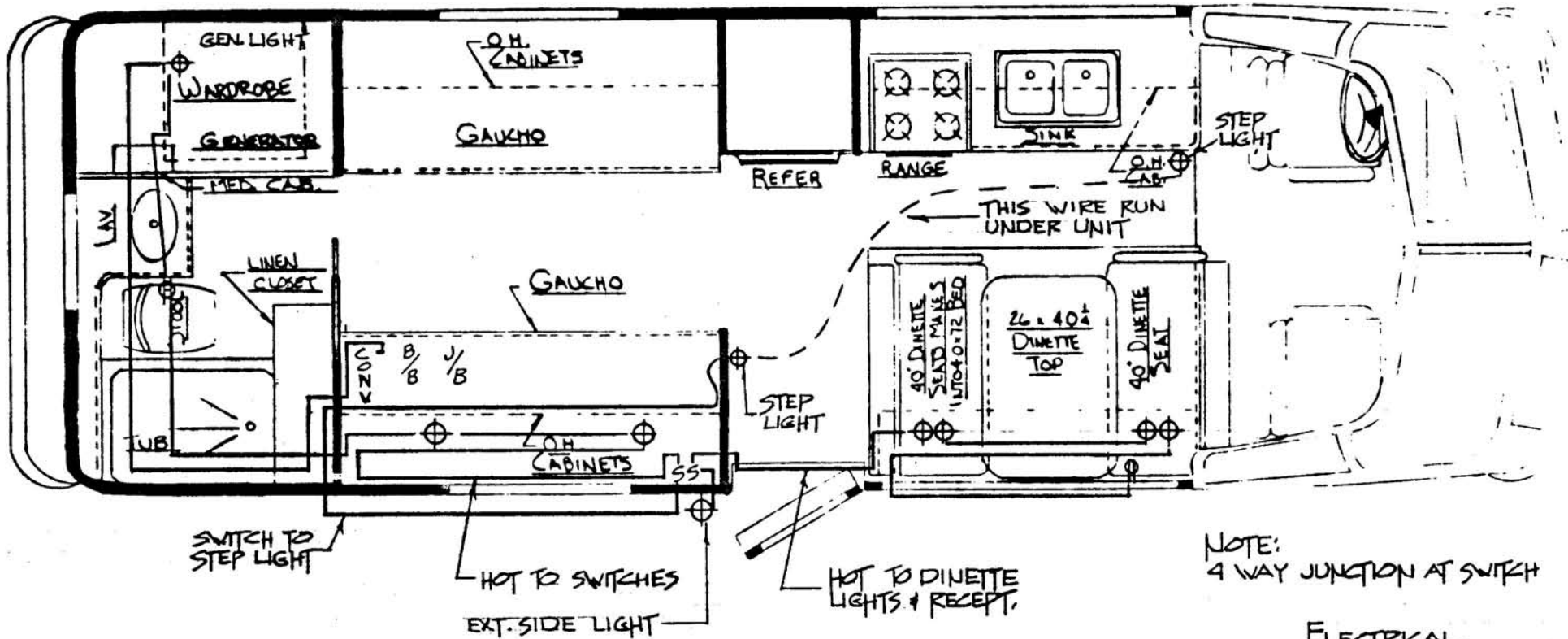
ELECTRICAL 12V.

					COACHMEN INDUSTRIES, INC.					
					MODEL	26' RB TRANSMODE	DATE	3/1/76	DWG. NO.	J-EL-256
					SUBJECT	CIRCUIT # 2 12V.	SCALE	NO SCALE	SHEET	DWG BY
									OF	GRIFFIN
SYM	REVISIONS				CHANGE NO	DATE	BY	SER NO	THRU	APPD. BY

CIRCUIT #4 - LIGHTS & RECEPTS - BLACK

AMP LOADS

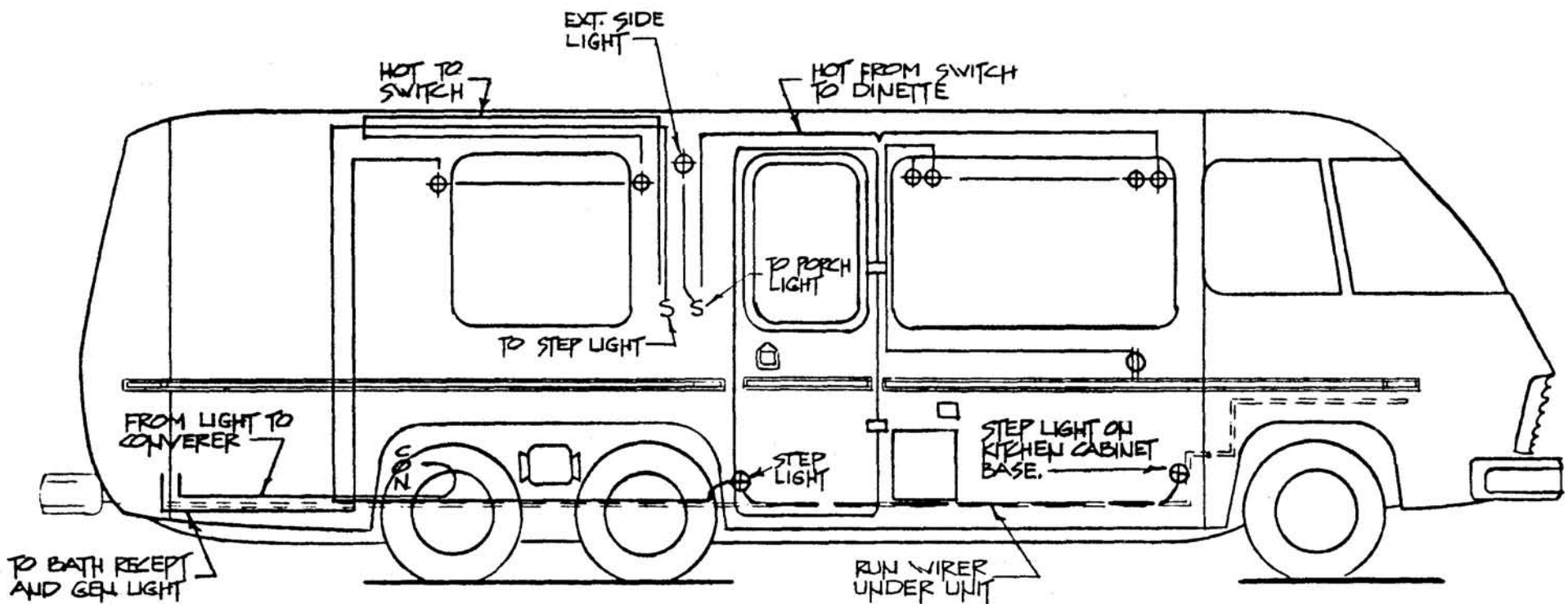
1.4 PER 12V BULB



ELECTRICAL

COACHMEN INDUSTRIES, INC.

				MODEL 26' RB TRANSMODE		DATE 3/1/76		DWG. NO. J-EL-257	
				SUBJECT CIRCUIT #4 12V.		SCALE NO SCALE		SHEET OF	
				SER. NO.		THRU		DWG BY GRIFFIN	
SYM				REVISIONS		CHANGE NO.		DATE BY	
								APPD. BY	

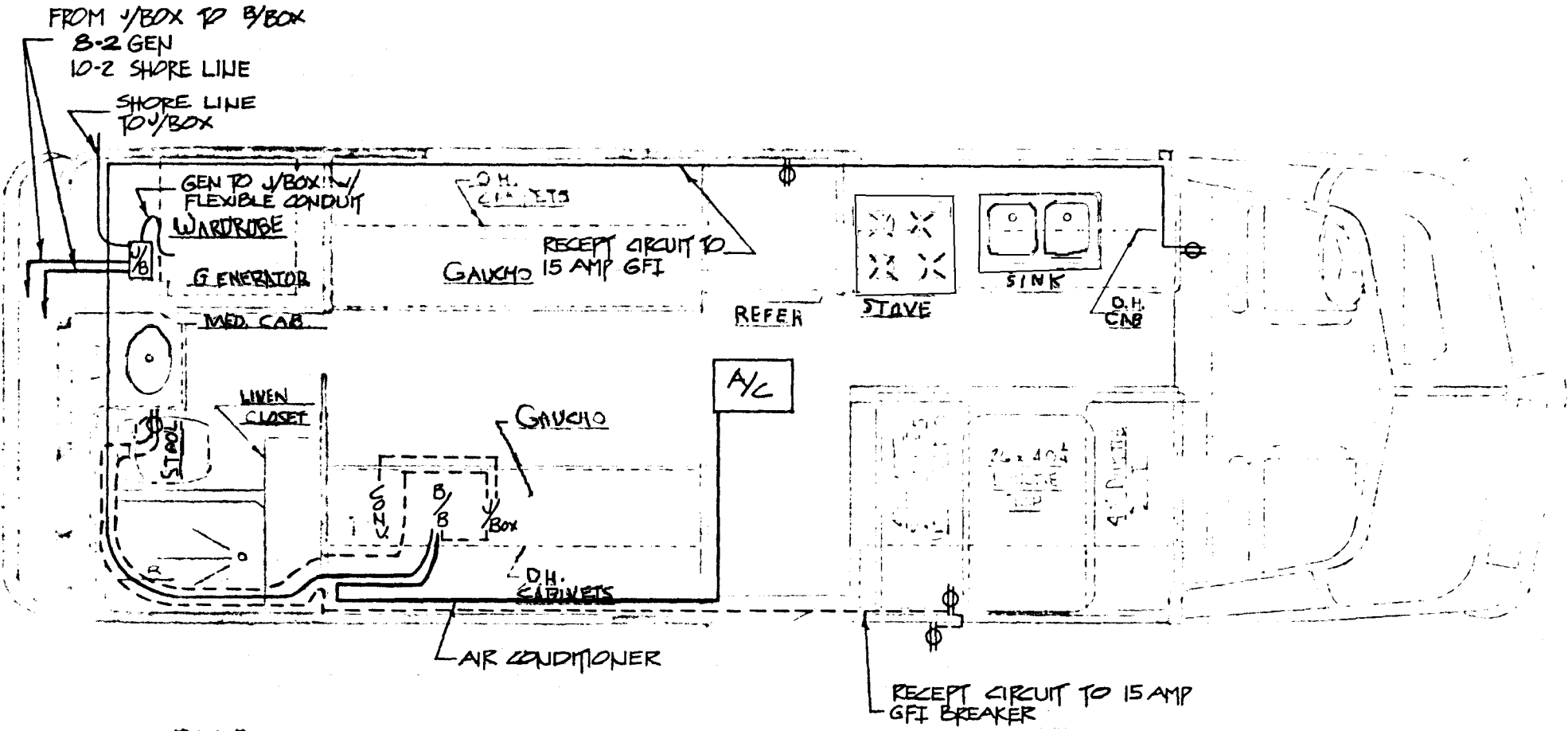


CIRCUIT #4 LIGHT & RECEPTS - BLACK 12v.
 AMP LOADS
 1.4 PER 12v. BULB

ELECTRICAL 12v.

COACHMEN INDUSTRIES, INC.

				MODEL	26' RB TRANSMODE	DATE	3/1/76	DWG. NO.	J-EL-258
				SUBJECT	LIGHT & RECEPT CIRCUIT #4	SCALE	NO SCALE	SHEET	CF
				DWG BY	GRIFFIN				
SYM	REVISIONS	CHANGE NO.	DATE	BY	SER. NO.	THRU	APPD. BY		



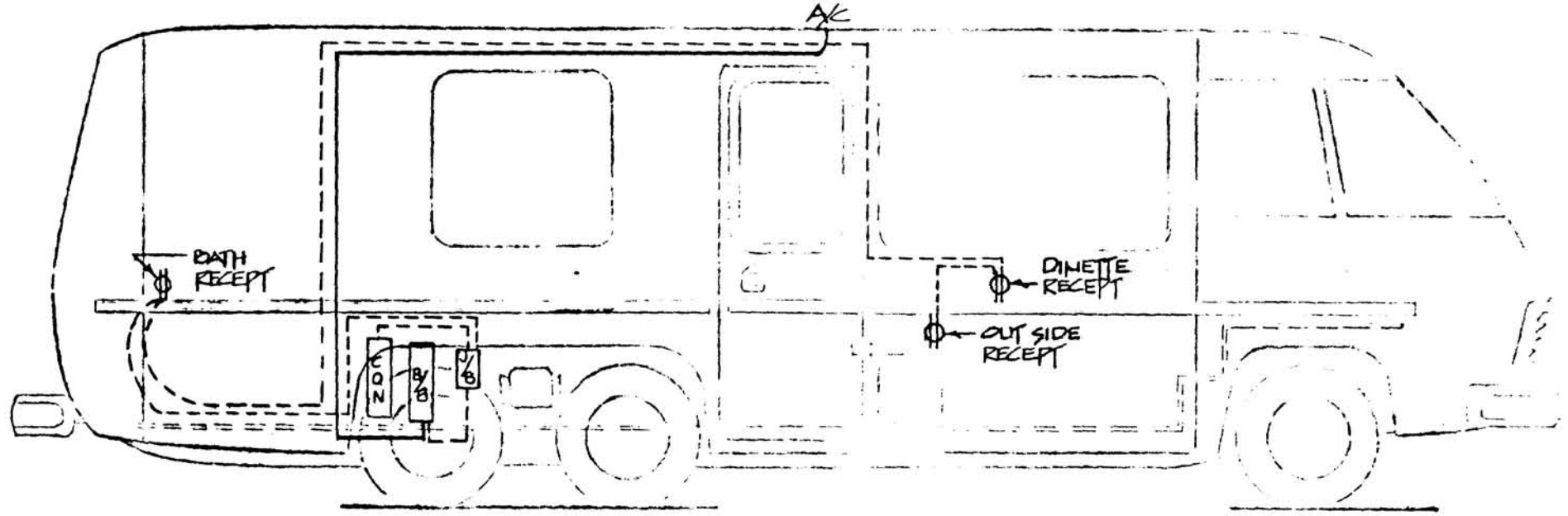
CIRCUIT #2 & #4 - RECEPT & LIGHTS - BLACK

ELECTRICAL 110V.

COACHMEN INDUSTRIES, INC.

				MODEL	26' RB TRANS MODE	DATE	3/1/76	DWG. NO.	J-EL-259-A
				SUBJECT	AIR & RECEPT CIRCUIT #2 & #4	SCALE		SHEET	1
								OF	1
				SER NO.		THRU.		APPD. BY	
A. REV. 10-2 WIRE TO 8-2				CHANGE NO.		DATE	5-11-76	BY	
								GRIFFIN	

----- RECEIPT CIRCUIT TO 15 AMP GFI BREAKER
 _____ AIR CONDITIONER

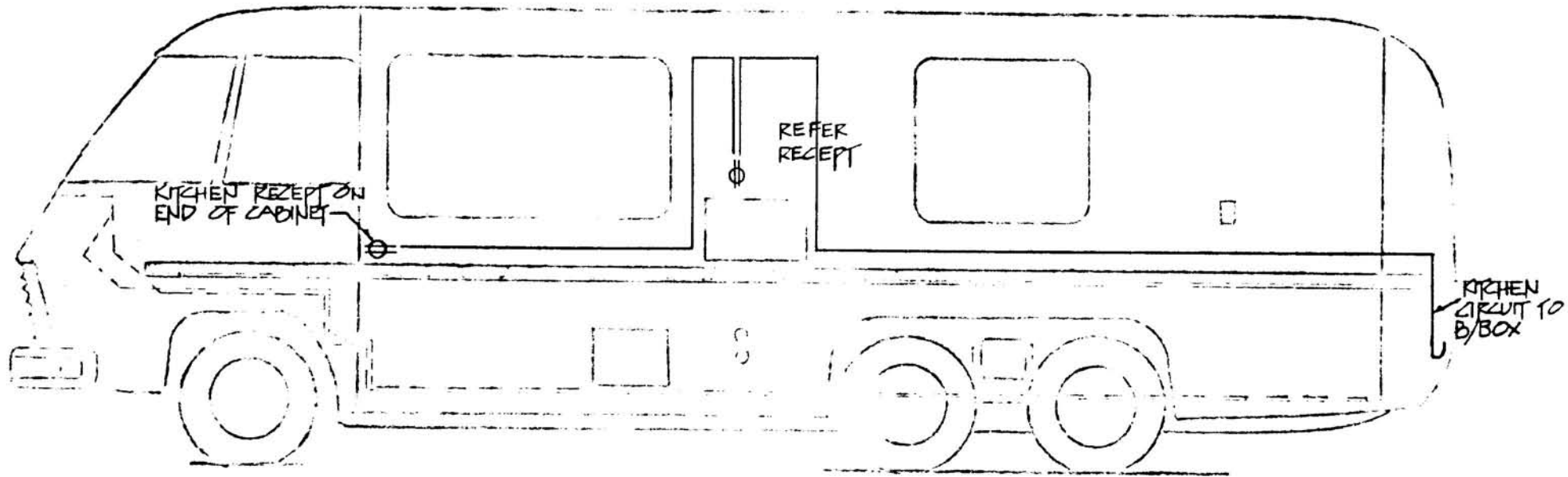


CIRCUIT #2 & #4 RECEPTS + LIGHTS - BLACK

ELECTRICAL 110V

COACHMEN INDUSTRIES, INC.

				ELECTRICAL 110V			
				COACHMEN INDUSTRIES, INC.			
				MODEL	26' RB TRANSMODE	DATE	3/1/76
SUBJECT	AK # RECEPT CIRCUIT #2 & #4	SCALE	NO SCALE	SHEET		DWG BY	GRIFFIN



CIRCUIT #24#4 - LIGHTS & RECEPTS - BLACK

KITCHEN RECEPT TO 20 AMP BREAKER

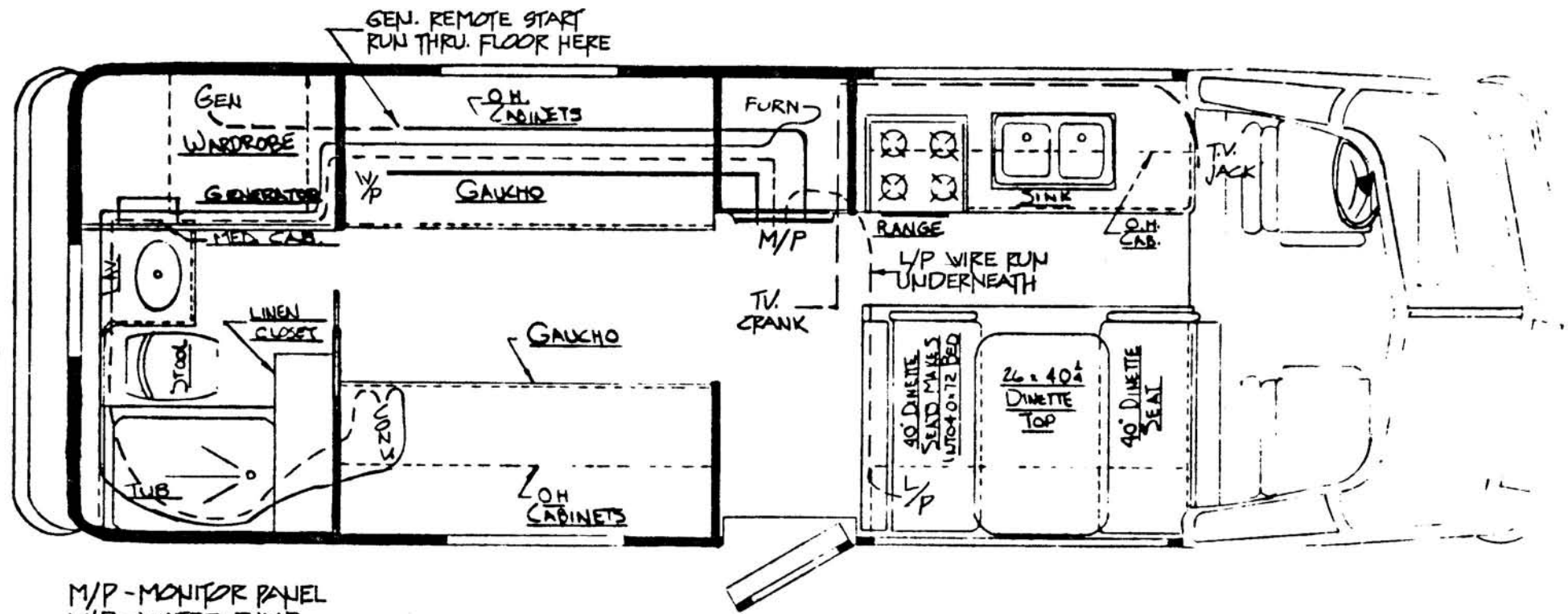
ELECTRICAL 110V.

COACHMEN INDUSTRIES, INC.

MODEL	26' RB TRANSMODE	DATE	3/1/76	DWG. NO.	J-EL-261
SUBJECT	KITCHEN CIRCUIT #244	SCALE	NO SCALE	SHEET OF	DWG BY GRIFFIN

TO CONVERTOR
 CIRCUIT #1 - FURNACE - BLUE
 " #5 MONITOR PANEL - GREEN
 TO MONITOR PANEL
 GEN. - RED, WHITE, BLUE, GREEN
 W/P - BLUE
 L/P - RED

AMP LOADS
 7.0 A WATER PUMP
 4.2 A FURNACE

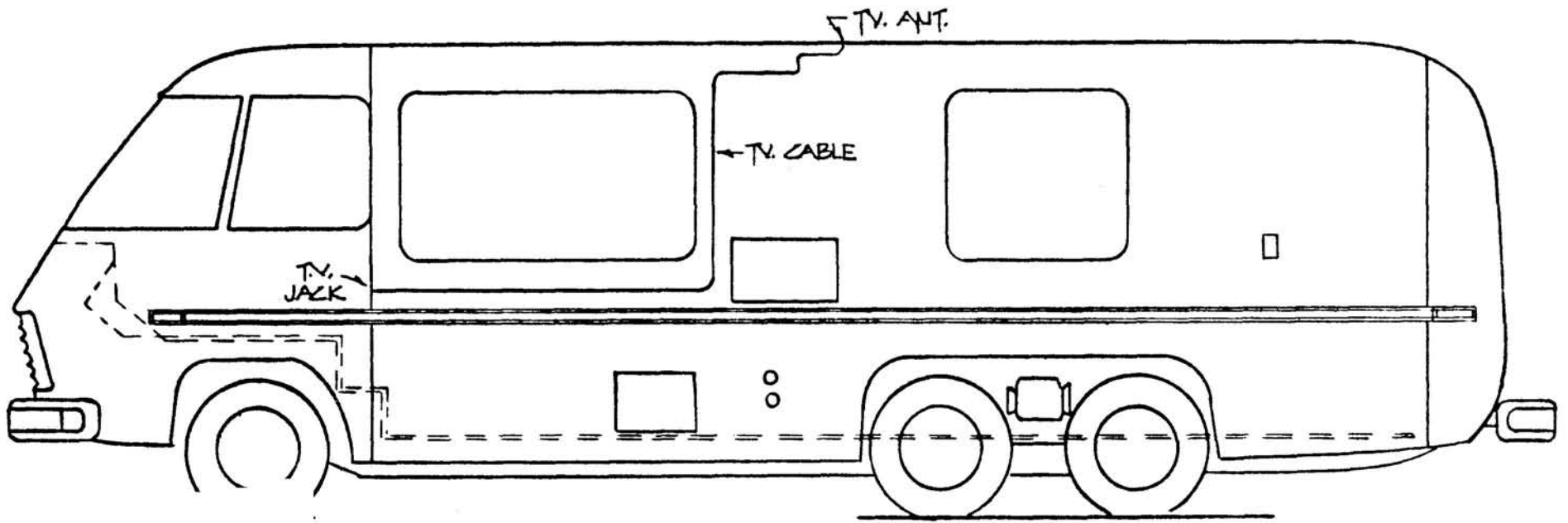


M/P - MONITOR PANEL
 W/P - WATER PUMP
 FURN. - FURNACE
 GEN. - GENERATOR
 L/P - PROPANE TANK

ELECTRICAL

COACHMEN INDUSTRIES, INC.

				MODEL	26 RB TRANSMODE	DATE	3/1/76	DWG. NO.	J-EL-262
				SUBJECT	CIRCUIT LAYOUT #1 & #5	SCALE	NO SCALE	SHEET	DWG BY
								OF	GRIFFIN
SYM	REVISIONS	CHANGE NO.	DATE	BY	SER NO.	THRU	APPD. BY		



ELECTRICAL

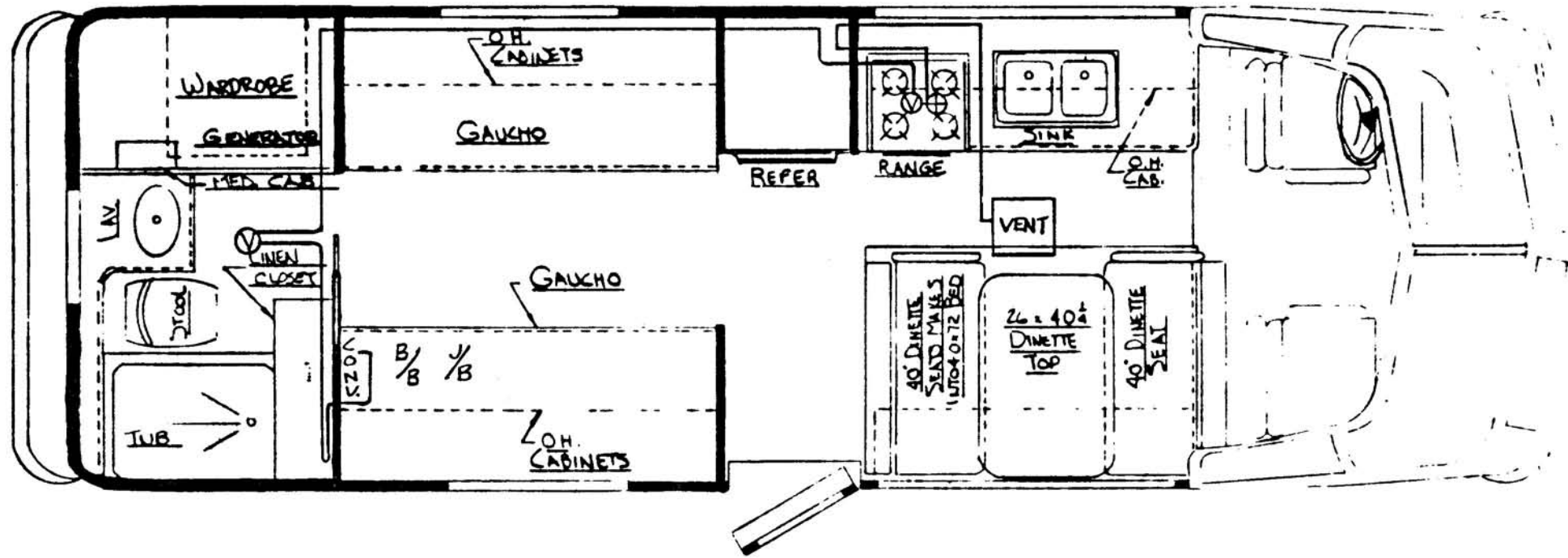
COACHMEN INDUSTRIES, INC.

					MODEL	26 FB TRANSMODE	DATE	3/1/76	DWG. NO.	J-EL-263
					SUBJECT	T.V. CABLE.	SCALE		SHEET OF	DWG BY GRIFFIN
SYM	REVISIONS	CHANGE NO.	DATE	BY	SER. NO.		THRU.		APPD. BY	

12V. CIRCUIT #3 - VENTS - RED

AMP LOAD

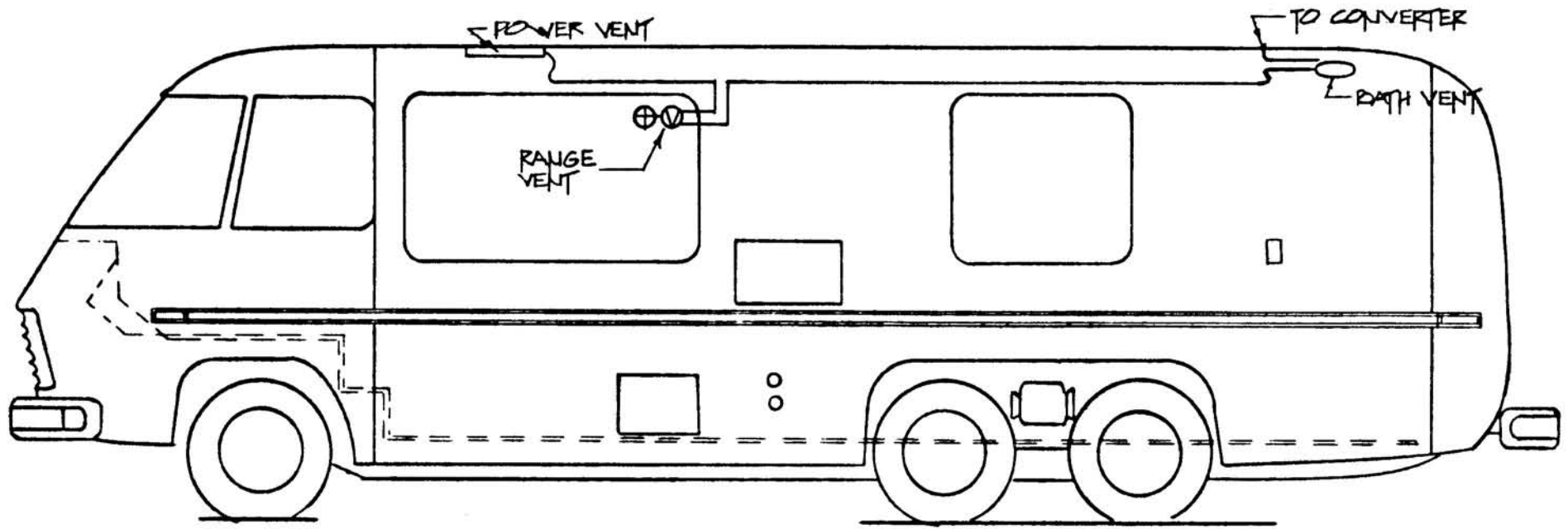
- 5.7 RANGE HOOD
- 3.4 POWER VENT



ELECTRICAL 12V.

COACHMEN INDUSTRIES, INC.

				MODEL 26' RB TRANSMODE		DATE 3/1/76	DWG. NO. J-EL-264
				SUBJECT VENT CIRCUIT #3		SCALE NO SCALE	SHEET OF
				SER. NO.		THRU	DWG. BY GRIFFIN
SYM	REVISIONS	CHANGE NO.	DATE	BY	APPD. BY		

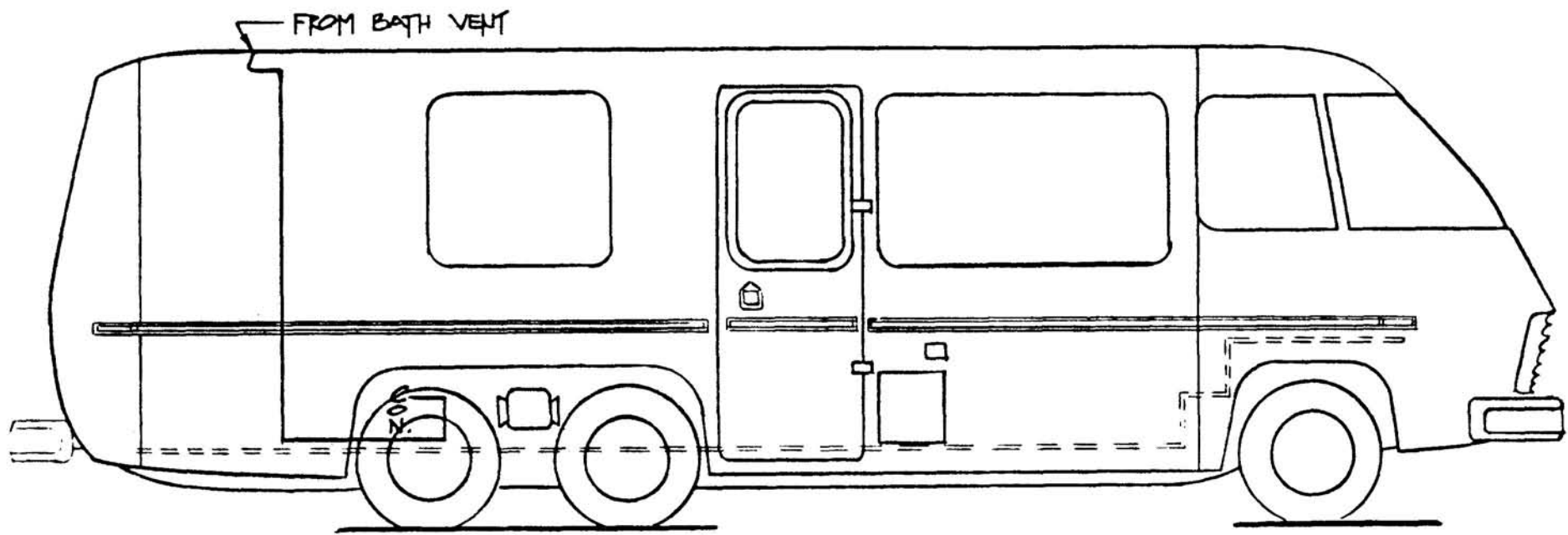


CIRCUIT #3-VENTS-RED
 AMP LOAD 5.7 RANGE HOOD
 " " 3.4 POWER VENT

ELECTRICAL

COACHMEN INDUSTRIES, INC.

						MODEL	26 RB TRANSMODE	DATE	3/1/76	DWG. NO.	J-EL-265
						SUBJECT	VENT CIRCUIT #3	SCALE	RD SALE	SHEET OF	DWG BY GRIFFIN
SYM	REVISIONS	CHANGE NO.	DATE	BY	SER NO	THRU	APPD. BY				



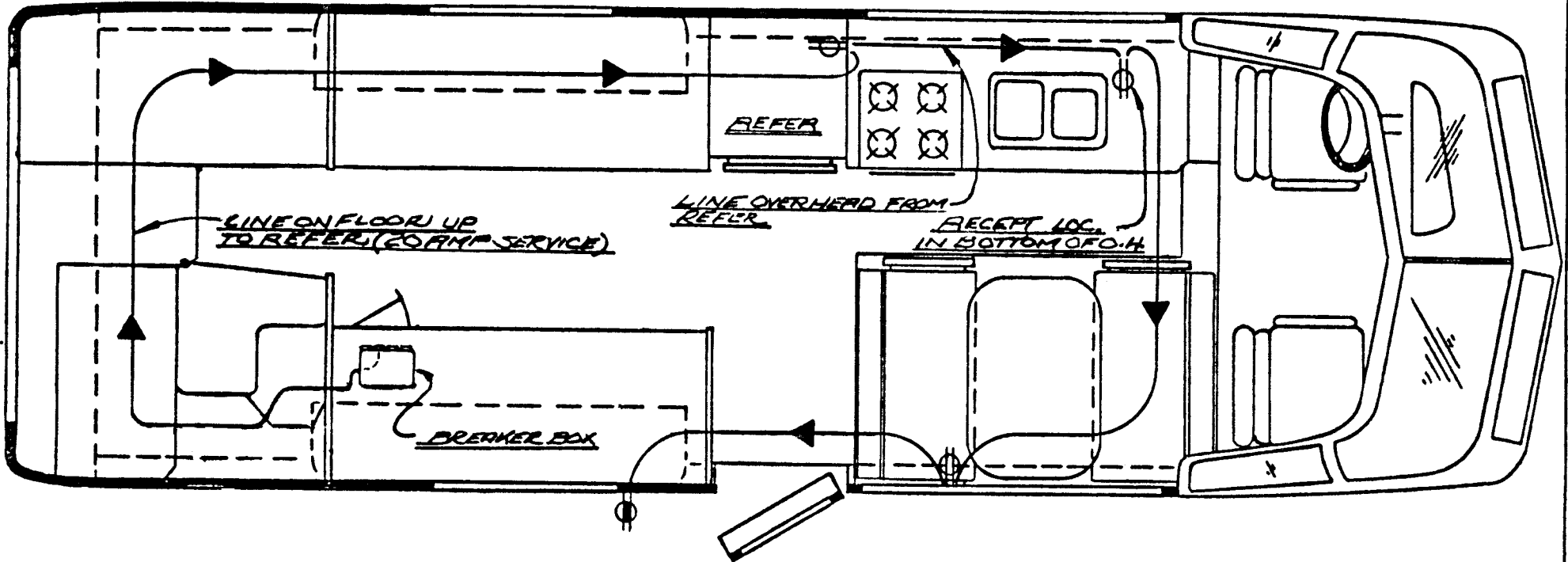
CIRCUIT # 3 VENTS - RED
 AMP LOAD 3.4 POWER VENT

ELECTRICAL

COACHMEN INDUSTRIES, INC.

MODEL	26' RB TRANSMODE	DATE	3/1/76	DWG. NO.	J-EL-266
SUBJECT	VENT CIRCUIT. #3	SCALE	NO SCALE	SHEET OF	DWG BY GRIFFIN

SYM	REVISIONS	CHANGE NO.	DATE	BY	SER. NO.	THRU	APPD. BY
-----	-----------	------------	------	----	----------	------	----------



- ⊕ INTERIOR RECEPT 110V. 12-2 WIRE
- ⊖ EXTERIOR RECEPT W/GROUND FAULT 110V. 12-2 WIRE

MAIN IS 10-2 110V.

COACHMEN INDUSTRIES, INC.

MOD. 26 RB TRANSMODE

DATE 9-4-75

DWG. NO. RBEL-261000

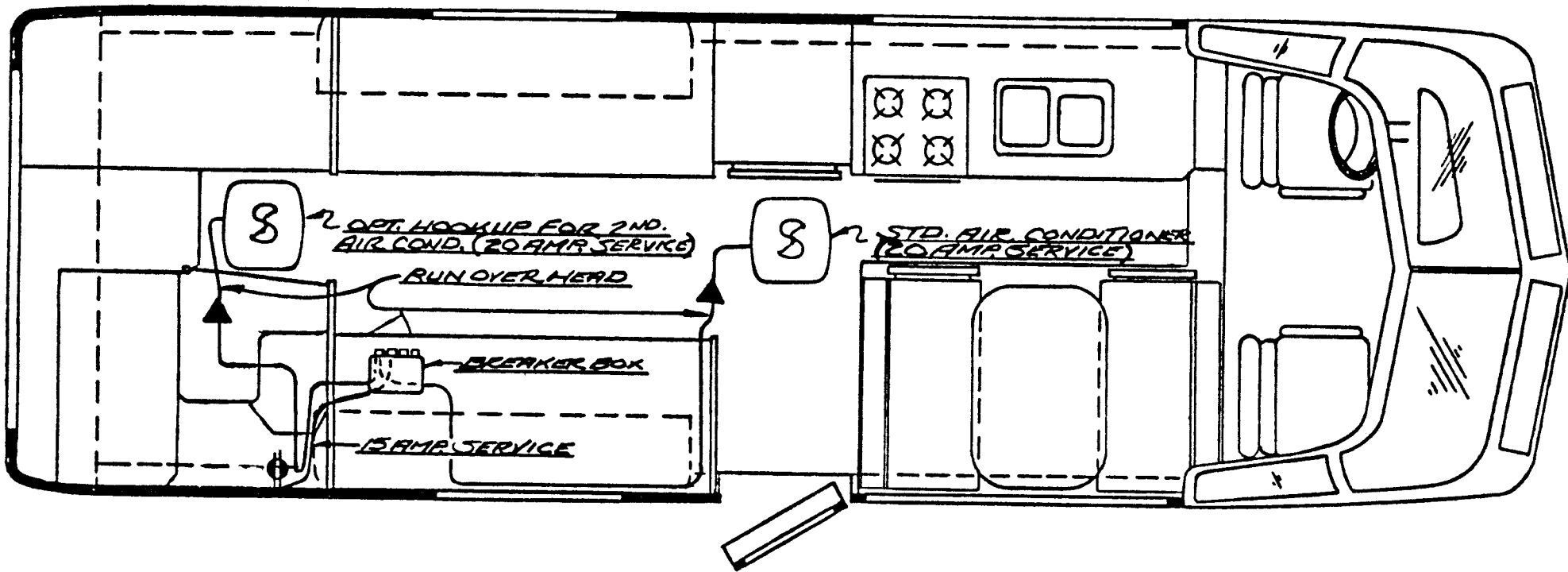
SUBJECT 110V. ELECTRICAL LINE 1

SCALE ~

SHEET 1
of 2

DWG BY
S. STOVER

SYM	REVISIONS	CHANGE NO.	DATE	BY	SER. NO.	THRU.	APPD. BY



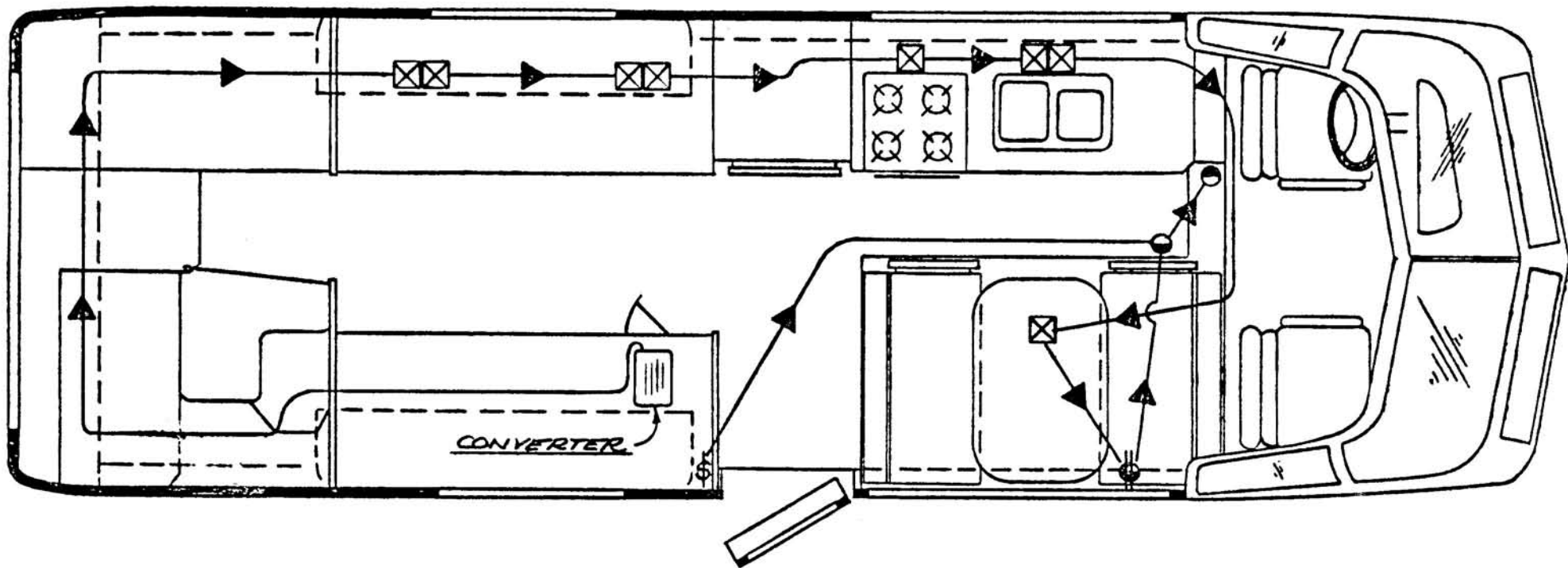
⊕ INTERIOR RECEPT W/GROUND FAULT BREAKER

MAIN IS 10-2 110V.

COACHMEN INDUSTRIES, INC.

MODEL	26' RB TRANS MODE	DATE	9-4-75	DWG. NO.	REBEL-261000
SUBJECT	110 V. ELECTRICAL LINES 2, 3, 4	SCALE	~	SHEET	2
SER. NO.		THRU.		OF 2	DWG. BY S. STOVER
					APPD. BY

SYM	REVISIONS	CHANGE NO.	DATE	BY



- COURTESY LIGHT
- ⊗ 12V. INTERIOR LIGHT
- ⊕ 12V. INTERIOR RECEPT
- Ⓢ 12V. SWITCH

COACHMEN INDUSTRIES, INC.

MODEL ZLORBT TRANS MODE

DATE 7-3-75

DWG. NO. RIBEL-261001

SUBJECT 12V. ELECTRICAL LINE #1

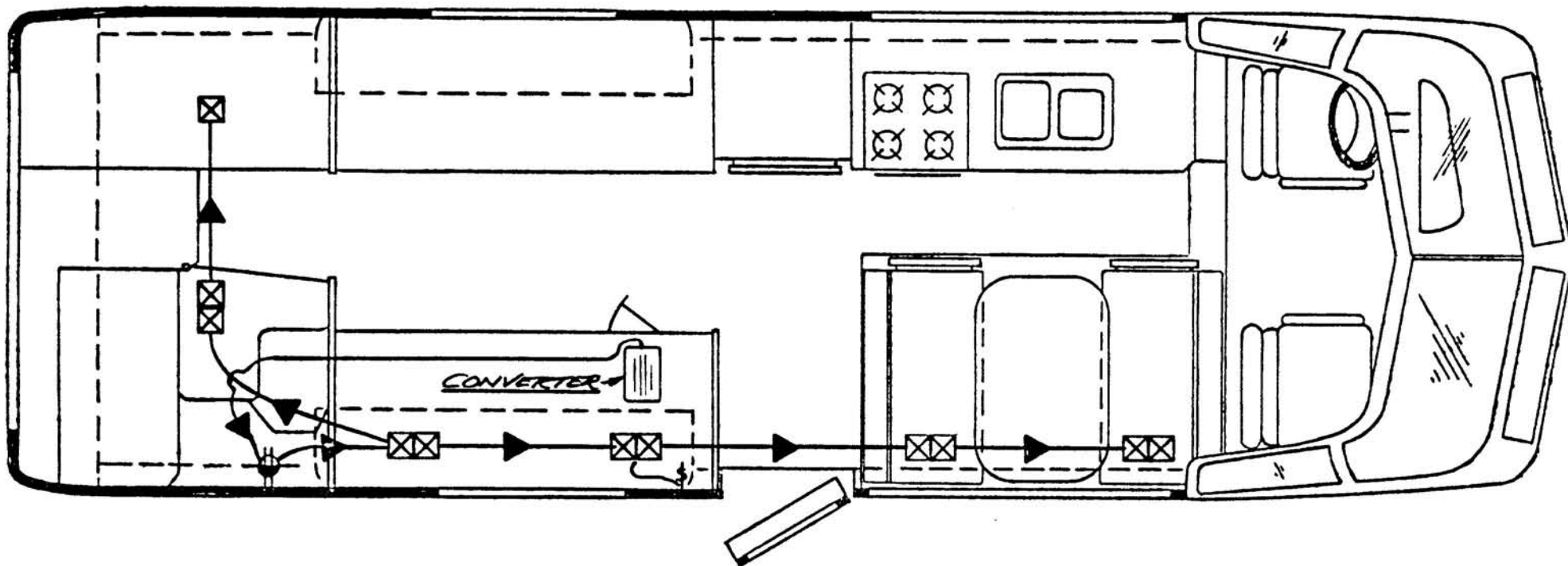
SCALE ~

SHEET 1
OF 4

DWG BY S. STOVER

SY.	REVISIONS	CHANGE NO.	DATE	BY

SER. NO.	THRU.	APPD. BY



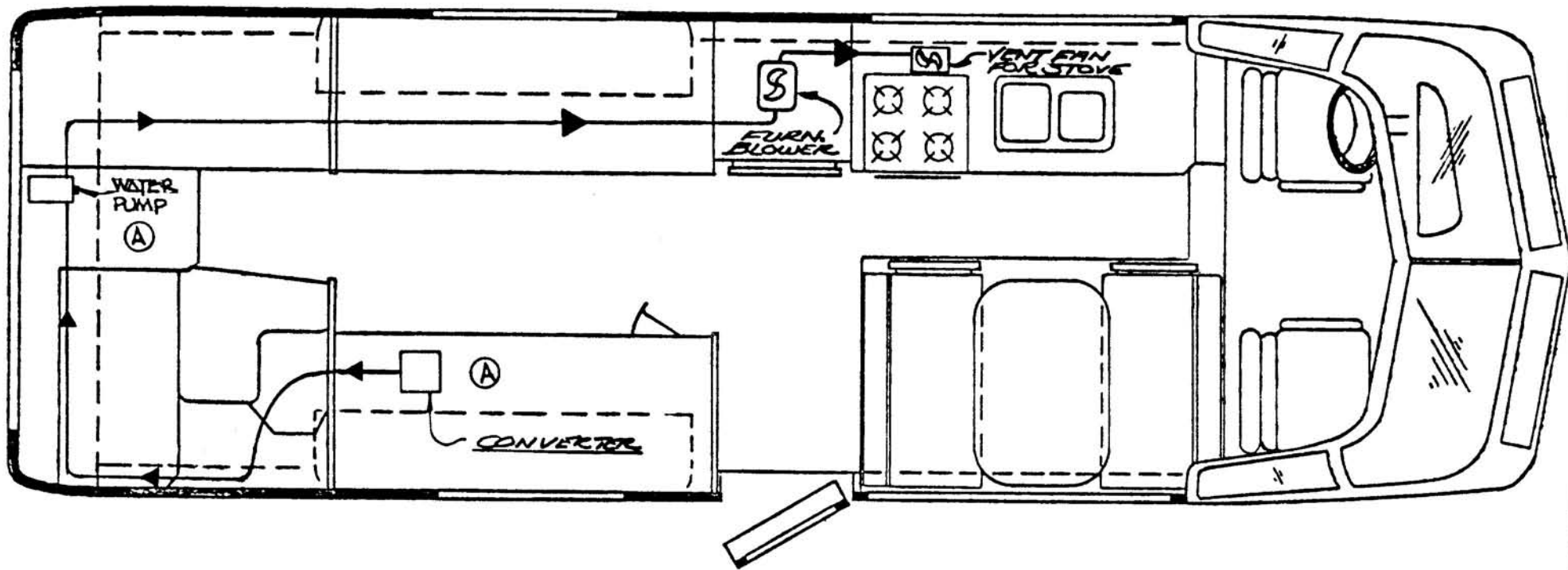
- ☒ 12V. INTERIOR LIGHT
- ⊕ 12V. INTERIOR RECEPT
- ⋈ 12V. SWITCH

COACHMEN INDUSTRIES, INC.

MODEL <i>26RB TRANSMODE</i>	DATE <i>9-3-75</i>	DWG. NO. <i>EBEL-261002</i>
SUBJECT <i>12V. ELECTRICAL LINE #2</i>	SCALE <i>~</i>	SHEET <i>2</i> OF <i>4</i>
		DWG. BY <i>S. STOVER</i>

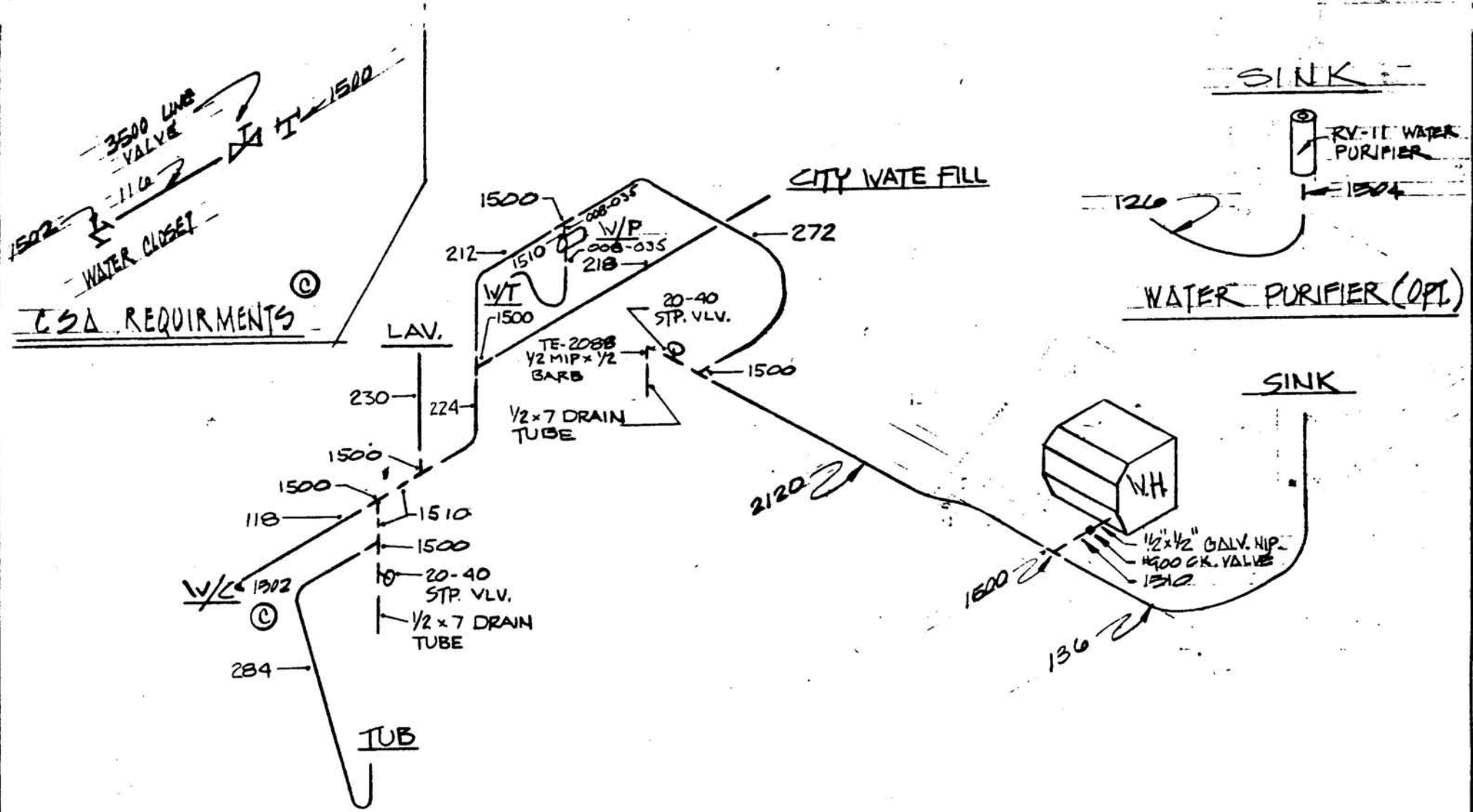
SYM	REVISIONS	CHANGE NO.	DATE	BY

SER. NO.	THRJ.	APPD. BY
----------	-------	----------



COACHMEN INDUSTRIES, INC.

					MODEL <i>26RB TRANS MODE</i>	DATE <i>9-3-75</i>	DWG. NO. <i>REBEL-261004-A</i>
					SUBJECT <i>12 V. ELECTRICAL LINE #4</i>	SCALE <i>~</i>	SHEET <i>4</i> OF <i>4</i>
<i>A.</i>	<i>RELOCATE W/P & CONVERTER</i>		<i>5-11-77</i>	<i>JVS</i>			DWG. BY <i>D. STOVER</i>
SYM	REVISIONS	CHANGE NO.	DATE	BY	SER. NO.	THRU	APPD. BY

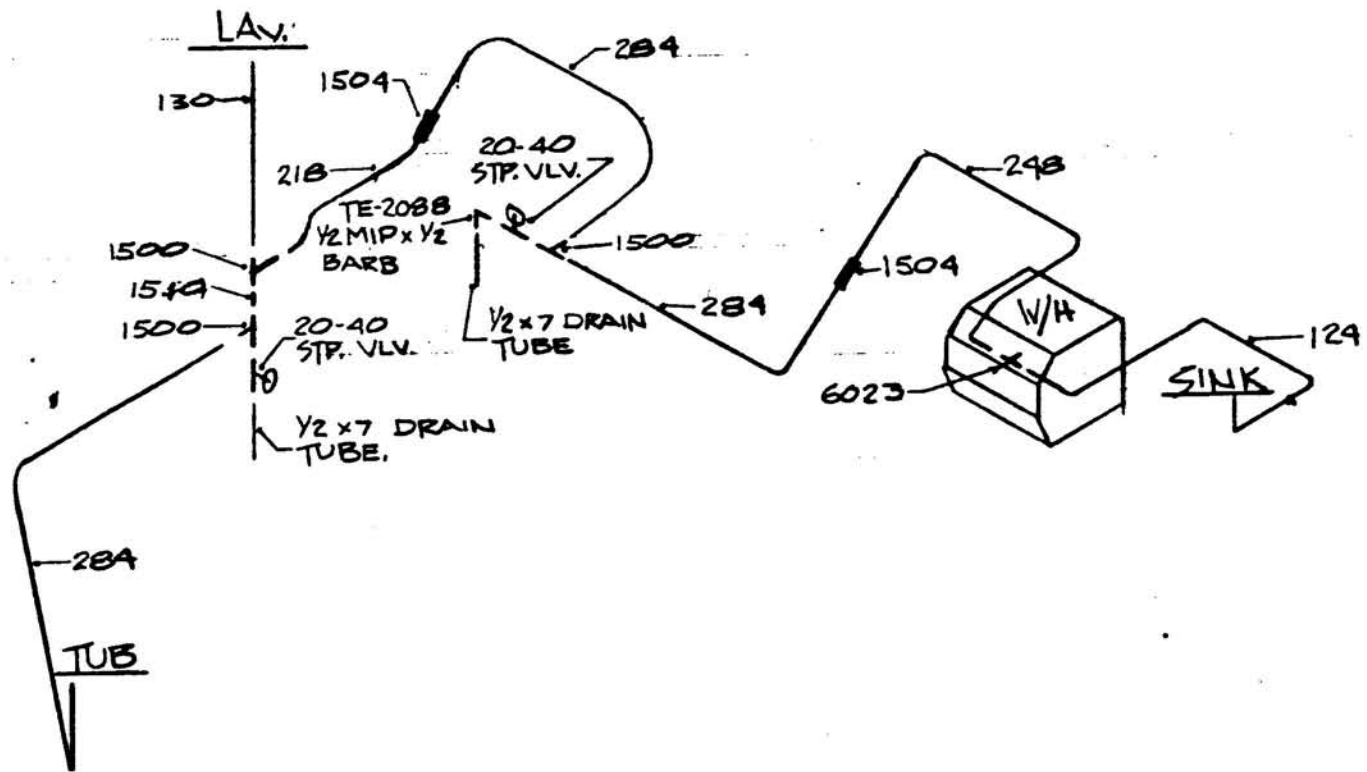


PLUMBING

COACHMEN INDUSTRIES, INC.

C.	ADD CSA NOTE & NOTE 1302 FITTING		6-15-77	JVS
B.	ADD WATER PURIFIER OPTION		3-30-77	JVS
A.	ADD SWIVEL 008-035		11-17-76	NG
SYM	REVISIONS	CHANGE NO.	DATE	BY

MODE	26 RB TRANSMODE	DATE	5-24-76	DWG. NO.	J-PL-413-C
SUBJECT	COLD WATER LINES	SCALE	~	SHEET	1
				OF	2
SER. NO.		THRU.		DWG BY	GRIFFIN
				APPD. BY	JS

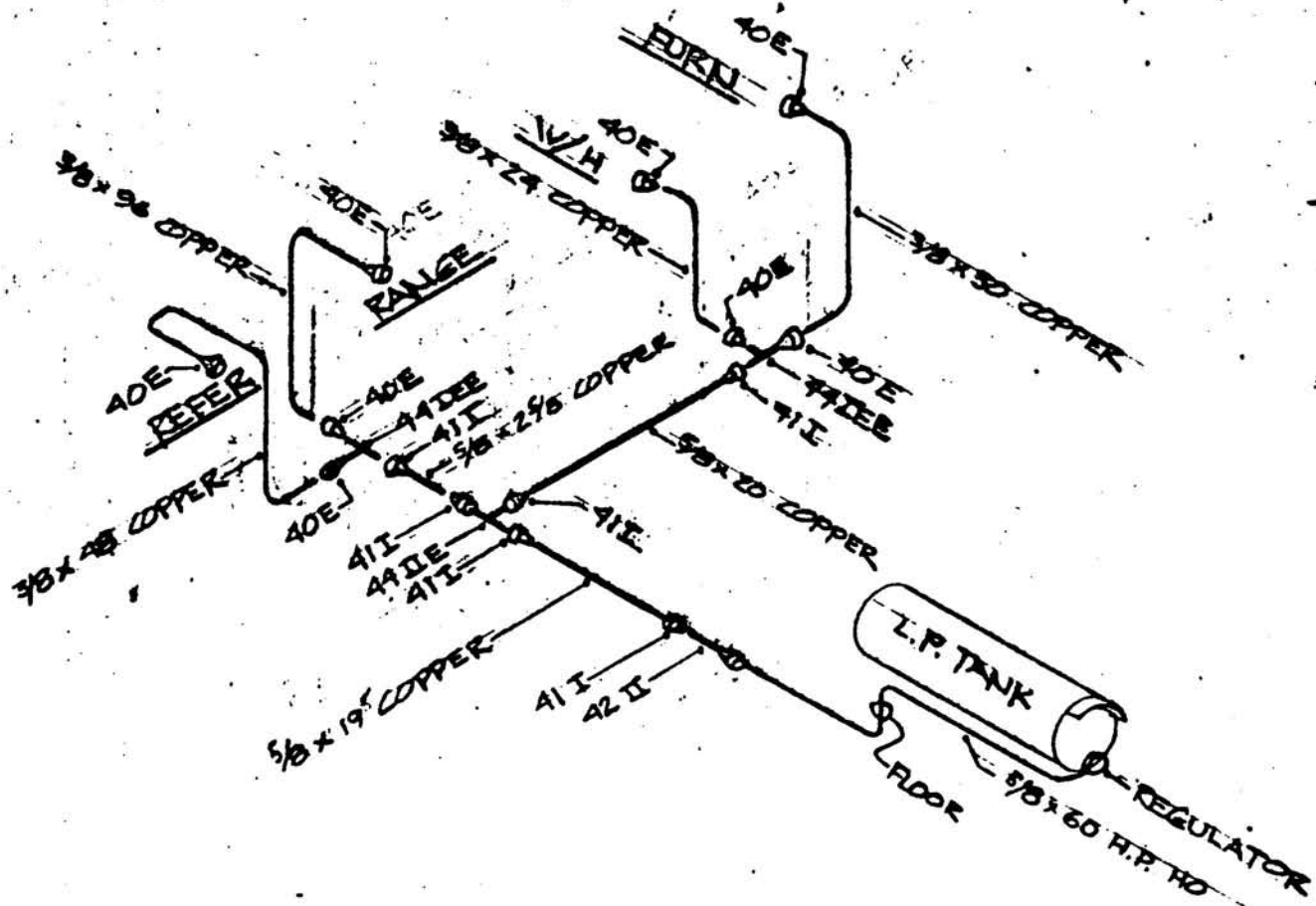


PLUMBING

COACHMEN INDUSTRIES, INC.

MODEL	26 RB TRANSMODE	DATE	5-24-76	DWG. NO.	J- PL-414
SUBJECT	HOT PLUMBING LINES	SCALE	~	SHEET	1
				OF	2
				DWG BY	GRIFFIN
				APPD. BY	<i>MS</i>

SYM	REVISIONS	CHANGE NO.	DATE	BY	SER. NO.	THRU.



PLUMBING

COACHMEN INDUSTRIES, INC.

MODE	26 SB & RB TRANSMODE	DATE	11-17-76	DWG. NO.	J-PL-807
SUBJECT	L.P. GAS LINES	SCALE	1/2"	SHEET	1 OF 2
				DWG. BY	GRIFIN

SYD	REVISIONS	CHANGE NO.	DATE	BY	SER. NO.	TWBU	APPR. BY
							VB

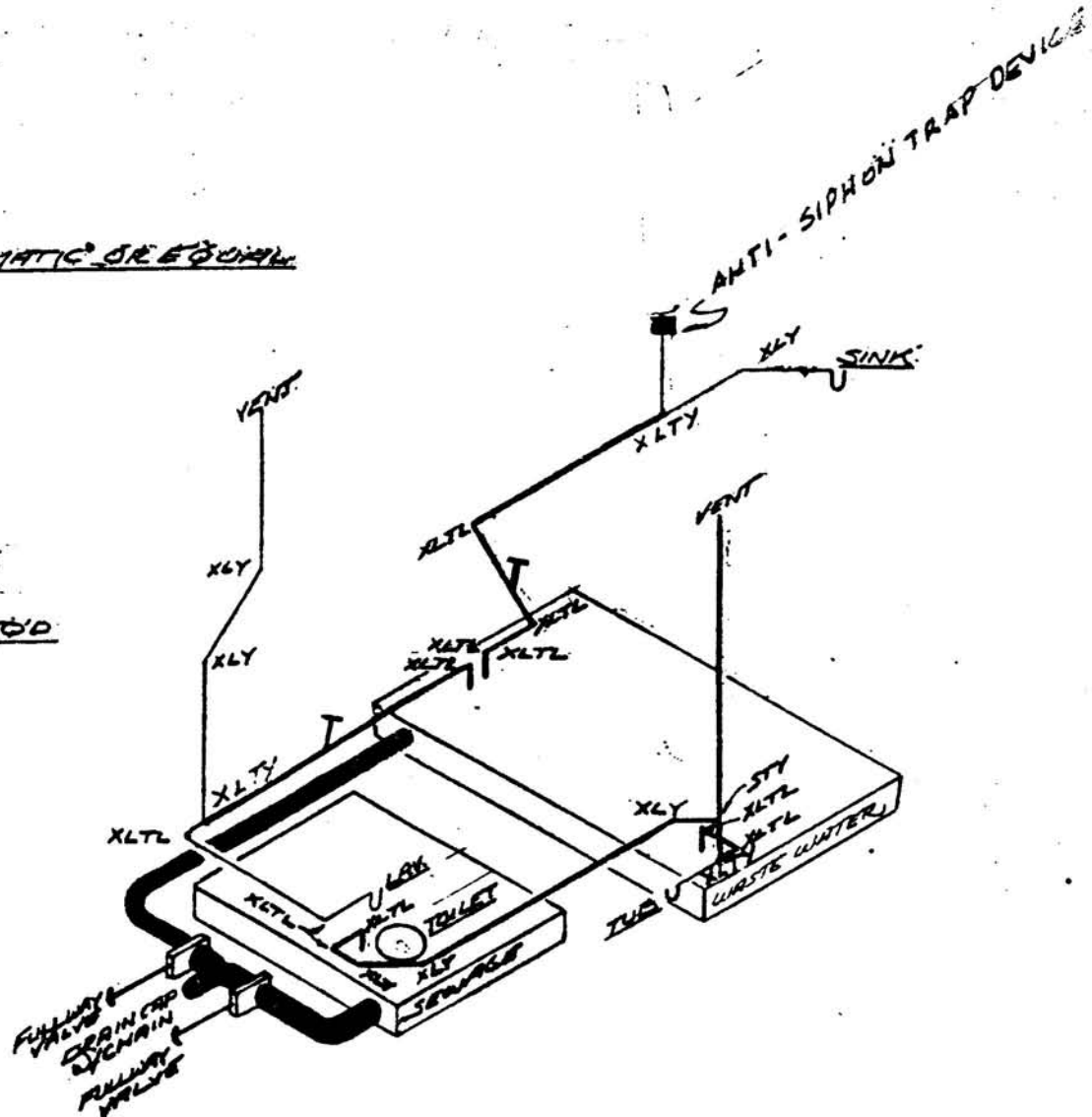
TOILET: MECH. SEAL MONOMATIC OR EQUAL

XLTL EXTRA LONG TURNELL
XLY 45° ELL
STY SANITARY TEE
 ——— = CLEANOUT WHERE REQ'D



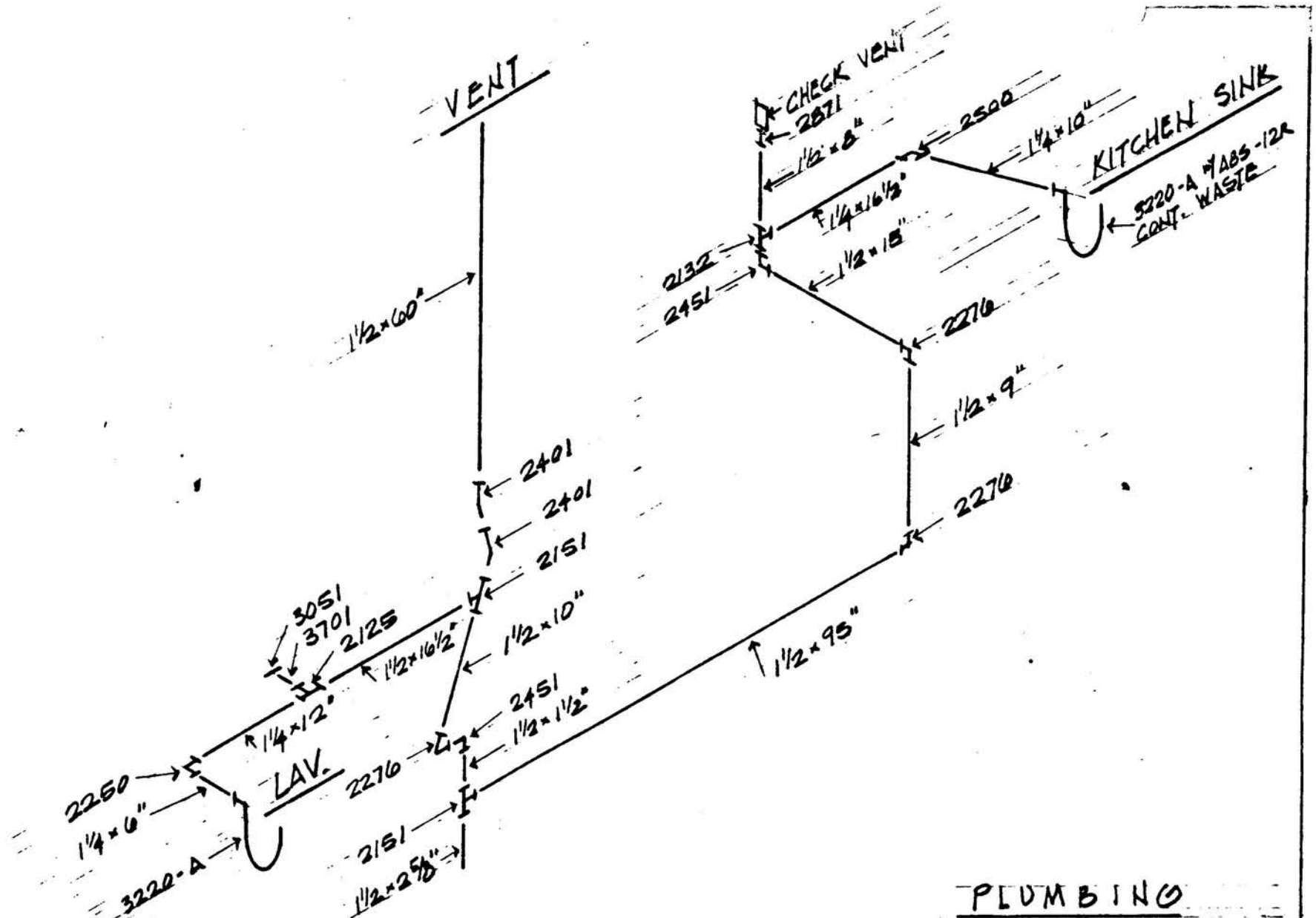
DIA. BLACK A.B.S.
TRAP ARMS 5/8" MAX.

MINIMUM GRADE: 1/8" PER FOOT
ABS SCHEDULE OR EQUAL



COACHMEN INDUSTRIES, INC.

				MODEL <u>210RBTRANSMODE</u>		DATE <u>10-17-75</u>	DWG. NO. <u>APB0000056-A</u>
				SUBJECT <u>P-1 DRAINAGE</u>		SCALE <u>~</u>	SHEET <u>1</u> OF <u>1</u>
				SER. NO.		DWG. BY <u>S. STOVER</u>	
				DATE <u>8/15 W 77</u>		APP. BY <u>WB</u>	
SYMBOL	REVISIONS	CHANGE NO.	DATE	BY	THRU		



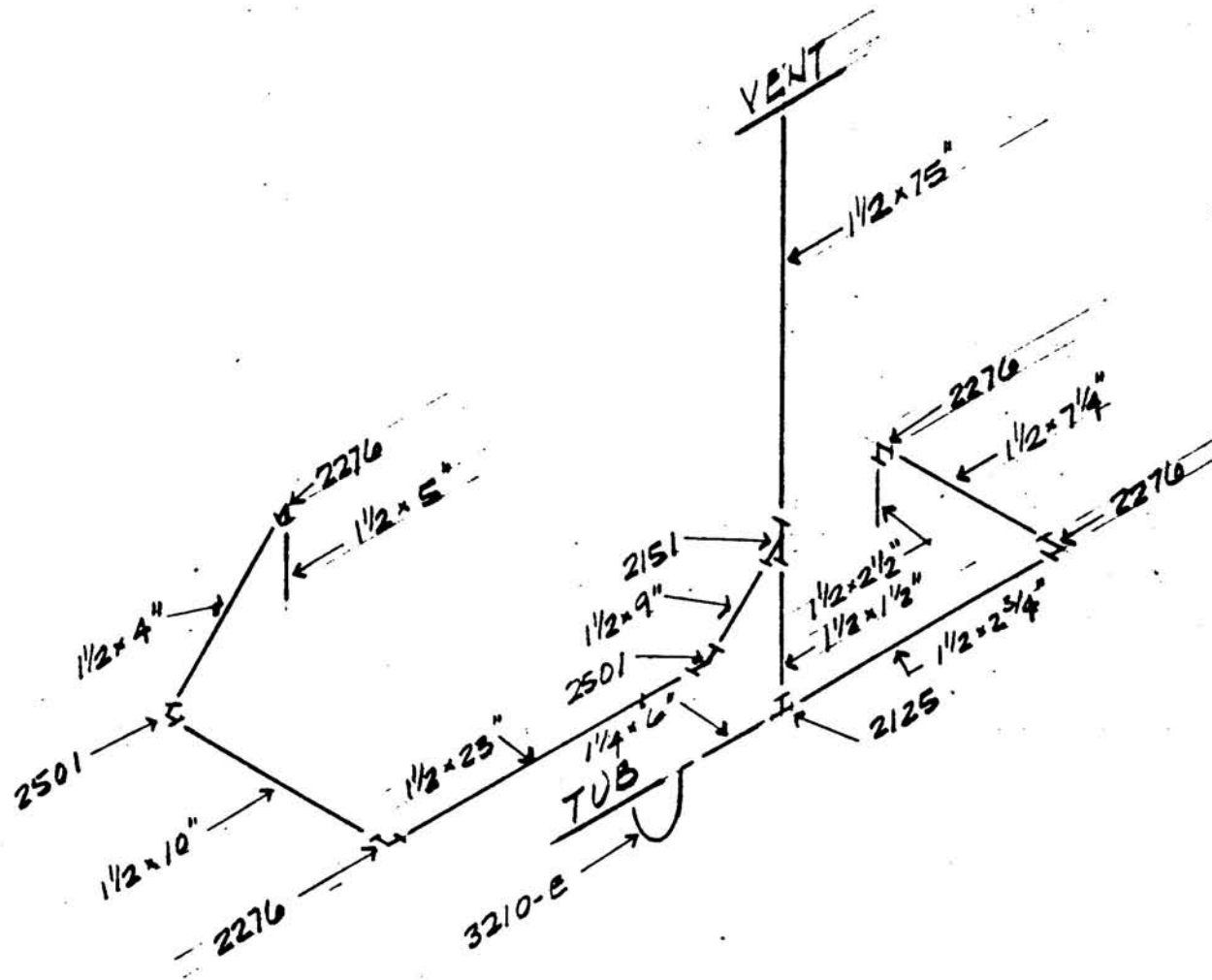
COACHMEN INDUSTRIES, INC.

MODEL	26' RB TRANSMODE	DATE	10-19-77	DWG. NO.	J-PL-186-D
SUBJECT	ABS. PLUMBING APP DOOR SIDE	SCALE	NONE	SHEET	1
				OF	4
				DWG BY	JOHN V. CIENCKI
				APPD. BY	WS

D. NEW DRAWING

10-19-77 JVS

SYM	REVISIONS	CHANGE NO.	DATE	BY	SER. NO.	THRU.	APPD. BY
-----	-----------	------------	------	----	----------	-------	----------



PLUMBING

COACHMEN INDUSTRIES, INC.

MODEL	26' RB TRANSMODE	DATE	10-19-77	DWG. NO.	J-PL-186-D
SUBJECT	ABS PLUMBING DOOR SIDE	SCALE	NONE	SHEET	3 OF 4
				DWG BY	JOHN V. SIENICKI

SYM	REVISIONS	CHANGE NO.	DATE	BY	SER. NO.	THRU.	APPD. BY	WS
-----	-----------	------------	------	----	----------	-------	----------	----