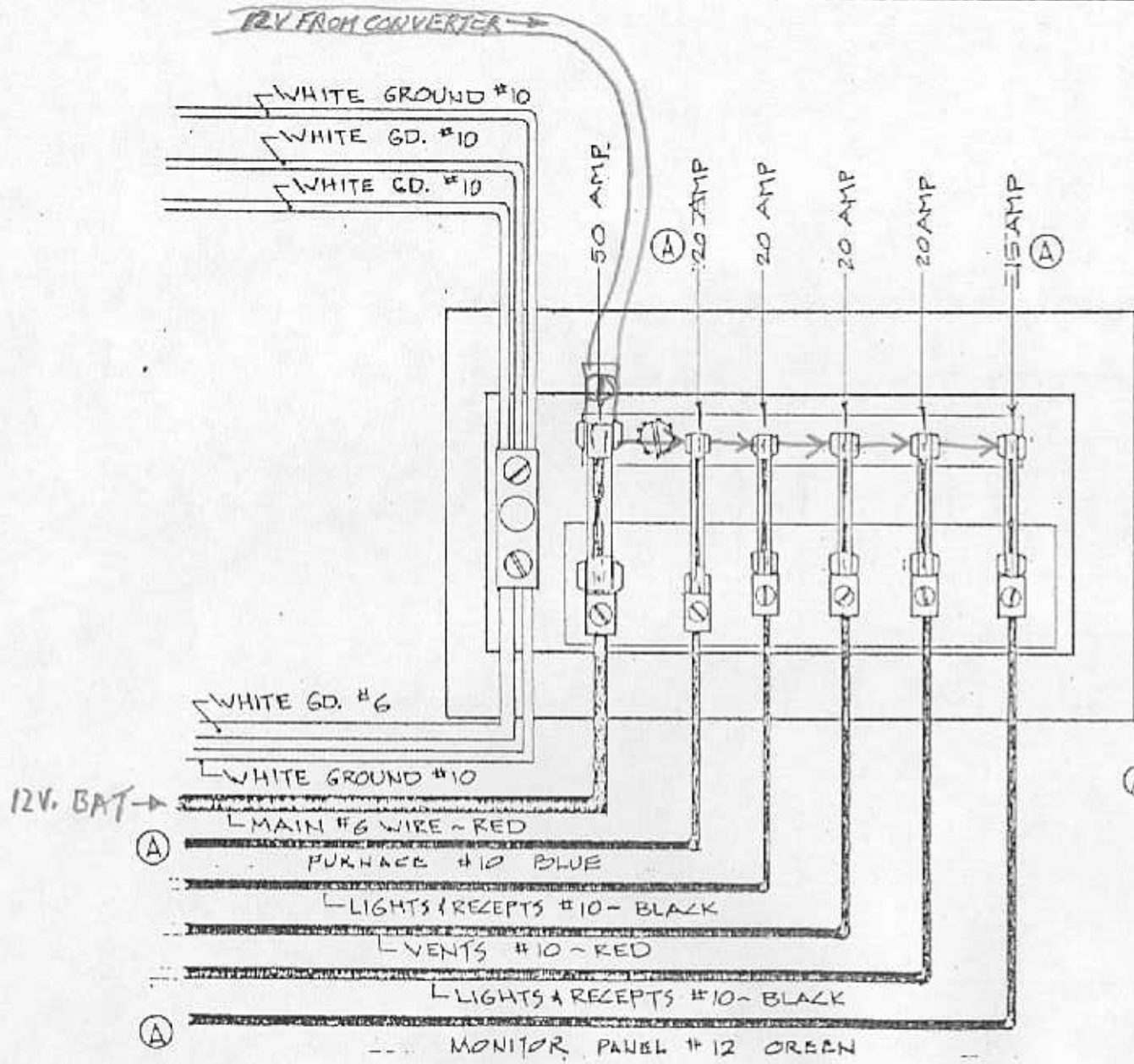


+ 114032

ELECTRICAL

COACHMEN INDUSTRIES, INC.

						ALL TRANSMODES		DATE 10-13-76	DWG. NO. J-EL-756
						MONITOR PANEL WIRE		SCALE	SHEET OF 1
SYM	REVISIONS	CHANGE NO.	DATE	BY	SER. NO.	THRU.	APPD. BY	GRIFFIN	



1500258

NOTE:
 TRIAD: ULTRA FUSE BLOCK
 NUMBER 60-B220-15

ELECTRICAL

COACHMEN INDUSTRIES, INC.

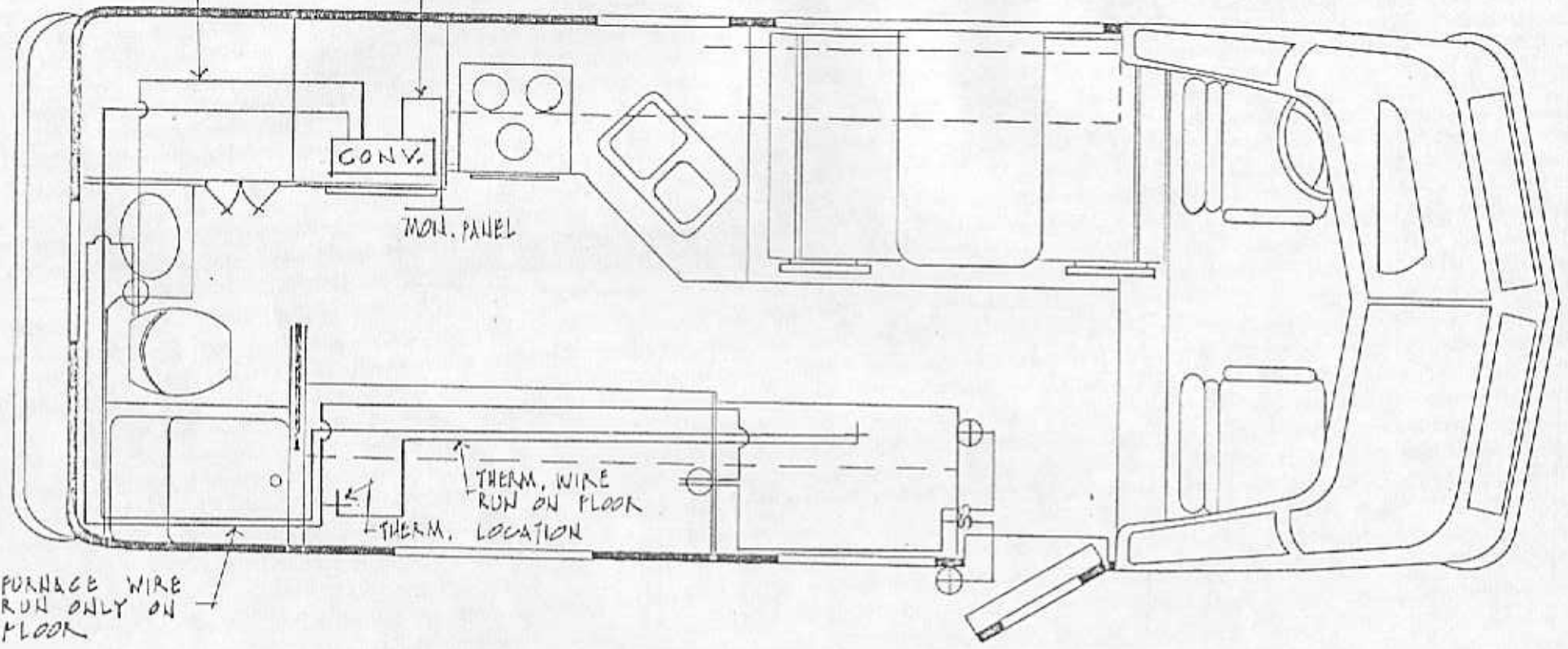
				MODEL	ALL TRANSMODES	DATE	5-17-76	DWG. NO.	J-EL-402-A
				SUBJECT	DISTRIBUTION BOX	SCALE	---	SHEET	1
								OF	1
A. REV. TURN & MONITOR PAN. HOOK-UPS				DATE	4-6-77	BY	JIS.	DWG BY	GREEN
SYM	REVISIONS	CHANGE NO.	DATE	BY	SER. NO.	INHL	APPD BY		

CIRCUIT #1 - FURN. - BLUE TO CONV.
 #3/4 - LIGHTS & RECEPT. - BLACK
 #5 - M/P - GREEN

J-EL-241 (27)
 AMP LOADS
 1.4 A. PER 12V. BULB

WIRE TO LIGHT
 CIRCUIT RUN ON
 FLOOR

CONV. TO MON. PANEL

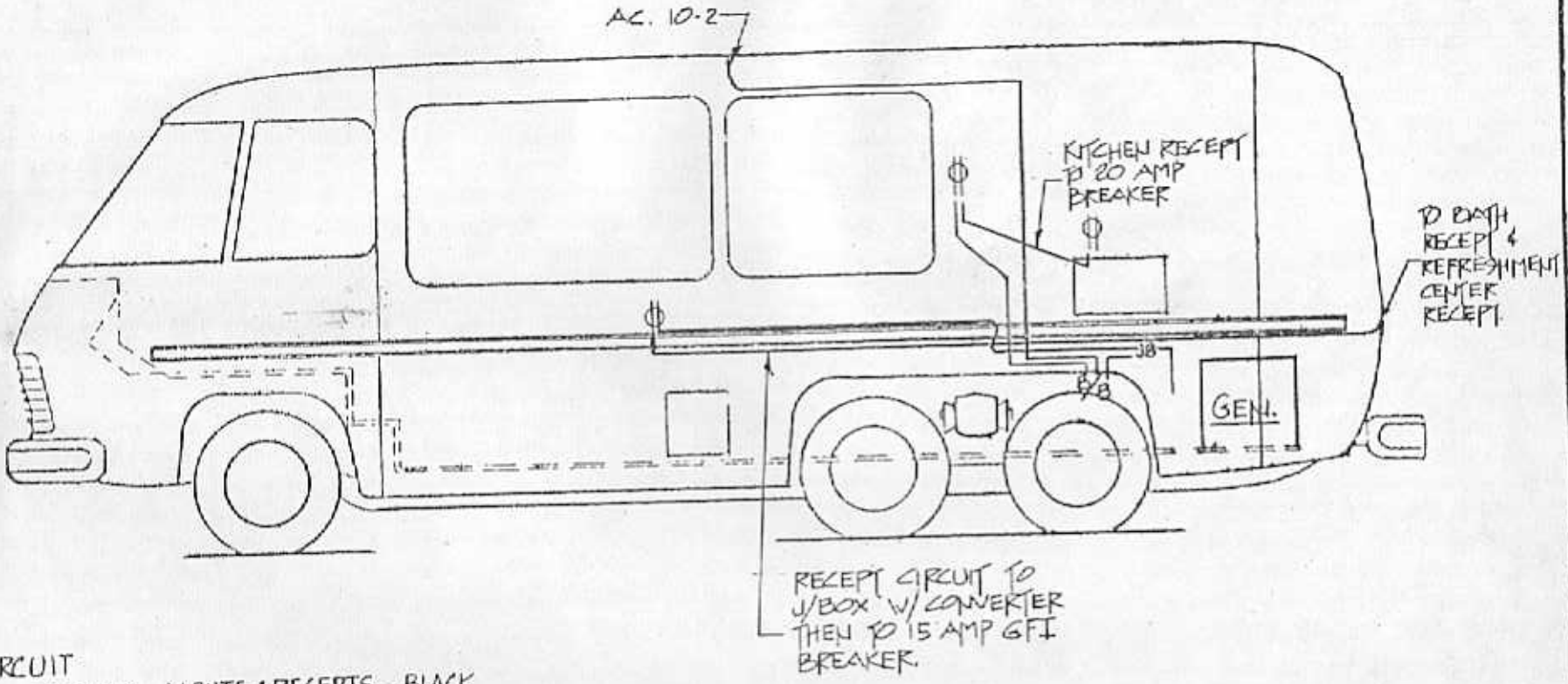


FURNACE WIRE
 RUN ONLY ON
 FLOOR

ELECTRICAL

COACHMEN INDUSTRIES, INC.

				MODEL 23' RB TRANSMODE	DATE 11-10-77	DWG. NO. J-EL-241
				SUBJECT WIRE RUN ON FLOOR 12 VOLT SYSTEM.	SCALE	SHEET 1 OF 1
SYN.	REVISIONS	CHANGE NO.	DATE	BY	SER. NO.	THRU.
						APPD. BY JOHN V. SIENIEKI

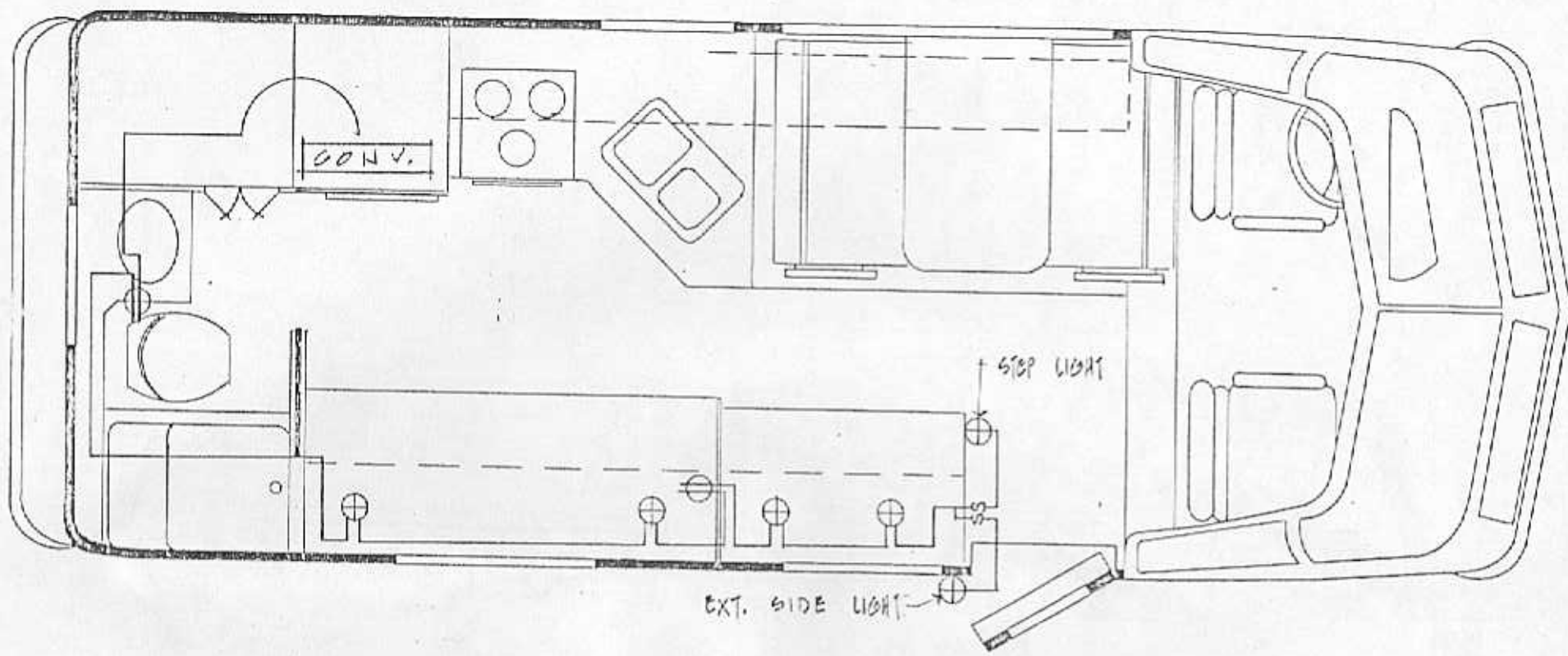


CIRCUIT
 # 2144 LIGHTS + RECEPTS - BLACK
 GEN - RED. WHITE. BLUE + GREEN TO M/P

110V.

COACHMEN INDUSTRIES, INC.

				MODEL	23' RD TRANSMODE	DATE	2/25/76	DWG. NO.	J-EL-249
				SUBJECT	ELECT. WIRE LAYOUT SIDE WALL	SCALE	NO SCALE	SHEET	DWG BY GRIFFIN
				CHANGE NO.		THRU		APPRO. BY	
STA	REVISIONS			CHANGE NO.	DATE	BY	SEE NO.		



TO CONVERTER
CIRCUIT #2 & #4 - LIGHT & RECEPTS. - BLACK

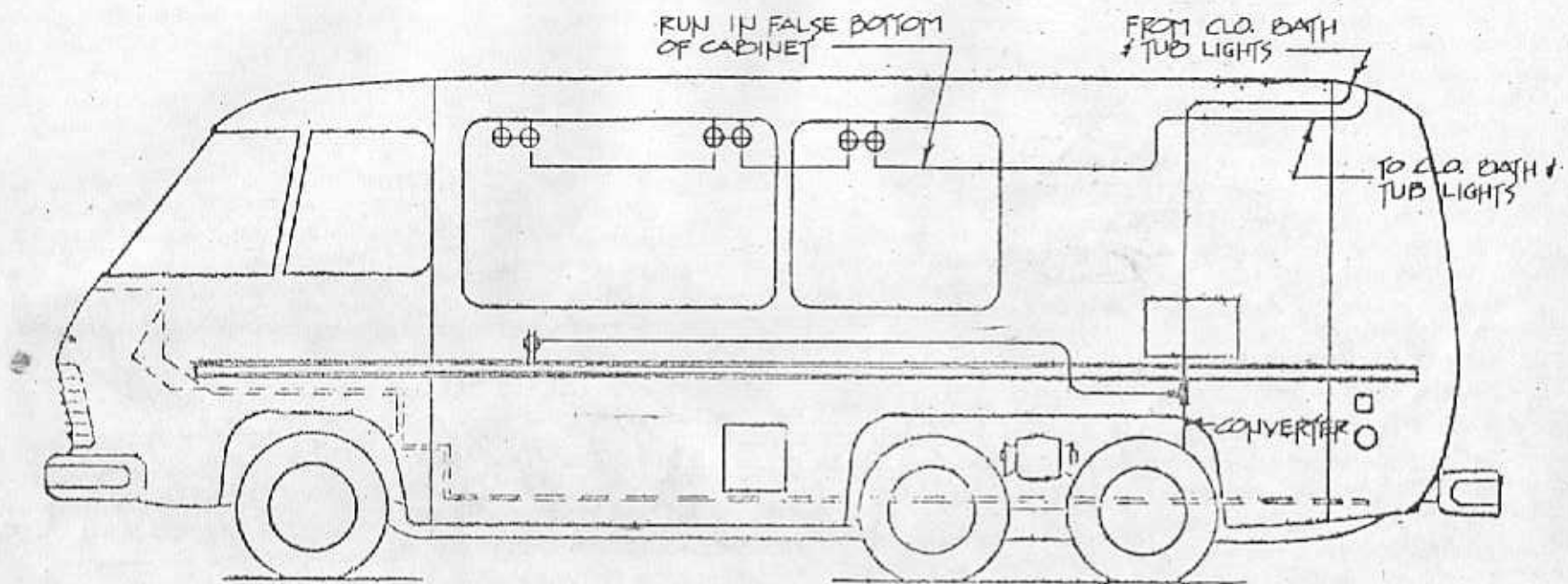
AMP LOADS
1.4 A. PER 12V. BULB

ELECTRICAL

COACHMEN INDUSTRIES, INC.

MODEL	23' RB TRANSMODE	DATE	11-10-77	DWG. NO.	J-EL-244
SUBJECT	12V. LIGHT CIRCUIT DOOR SIDE OF FLOOR	SCALE		SHEET	1
				OF	1
				DWG. BY	JOHN V. SIENICKI
				APPD. BY	

SYM	REVISIONS	CHANGE NO.	DATE	BY	SER.	THRU

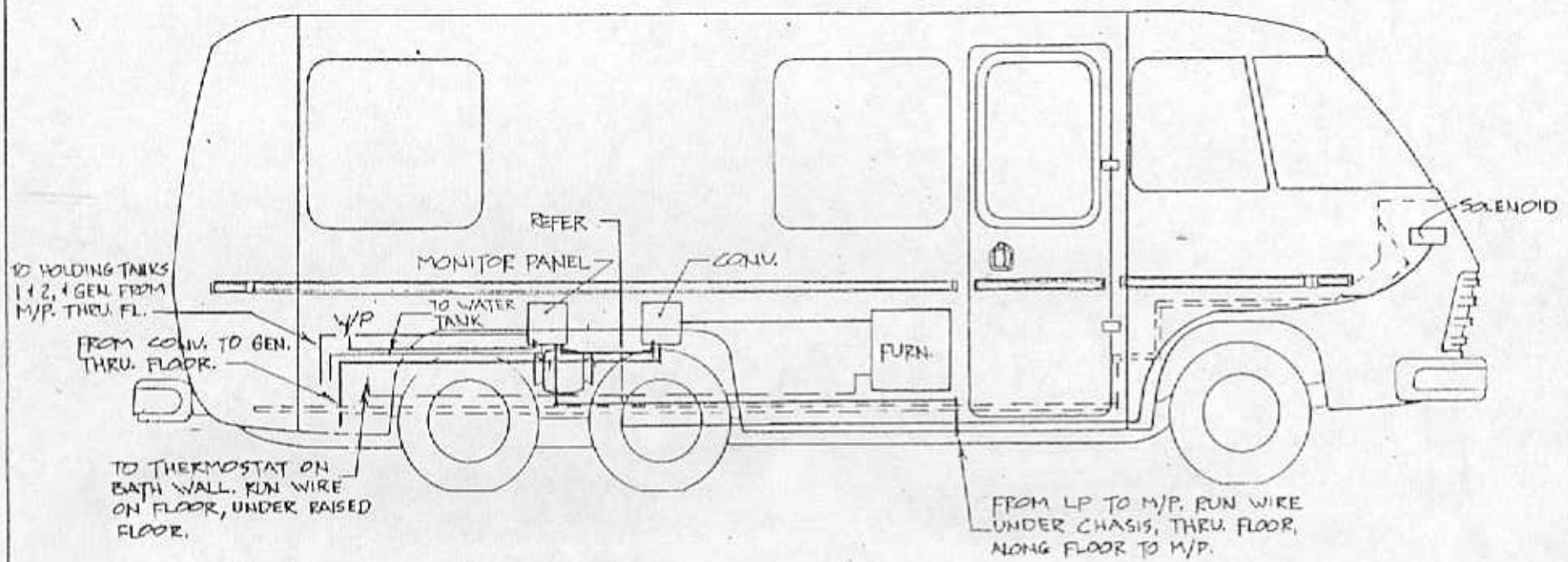


CONVERTER
 CIRCUIT #2 + #4 - LIGHTS + RECEPTS - BLACK
 AMP 1.4 PER 12V. BULB

12v. Light Circuit

COACHMEN INDUSTRIES, INC.

						MODEL	23' RB TRANSMODE	DATE	2/25/76	DWG. NO.	J-EL-247
						SUBJECT	ELECT WIRE LOCATION	SCALE	NO SCALE	SHEET	1
										OF	2
										DWG BY	GRIFFIN
										APPRO. BY	
174		REVISIONS		CHANGED NO.	DATE	BY	SER NO.		THRU.		



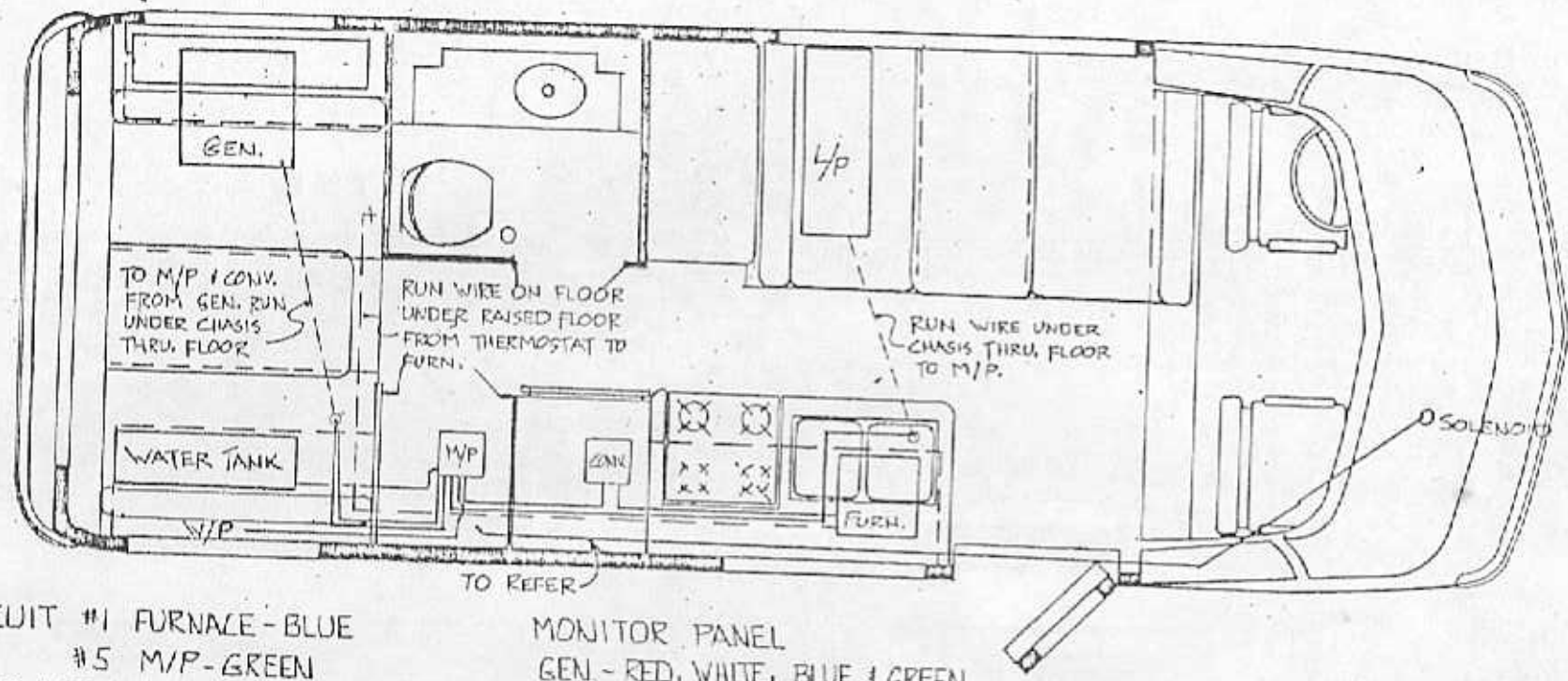
CIRCUIT #1 FURNACE - BLUE
 +5 M/P - GREEN
 AMP LOADS
 7.0 WATER PUMP
 11.0 REFER
 4.2 FURNACE

MONITOR PANEL
 GEN. - RED, WHITE, BLUE, GREEN
 W/P - BLUE
 L/P - RED
 HOLDING TANKS
 WATER TANK

ELECTRICAL 12V.

COACHMEN INDUSTRIES, INC.

				MODEL 23 SB TRANSMODE		DATE 4-29-76	DWG. NO. J-EL-365	
				SUBJECT MONITOR PANEL		SCALE	SHEET 1 OF 2	DWG BY GRIFFIN
STM	REVISIONS	CHANGE NO.	DATE	BY	SER. N.	THRU.	APPD. BY	



CIRCUIT #1 FURNACE - BLUE
 #5 M/P - GREEN
 AMP LOADS
 7.0 WATER PUMP
 11.0 REFER.
 4.2 FURNACE

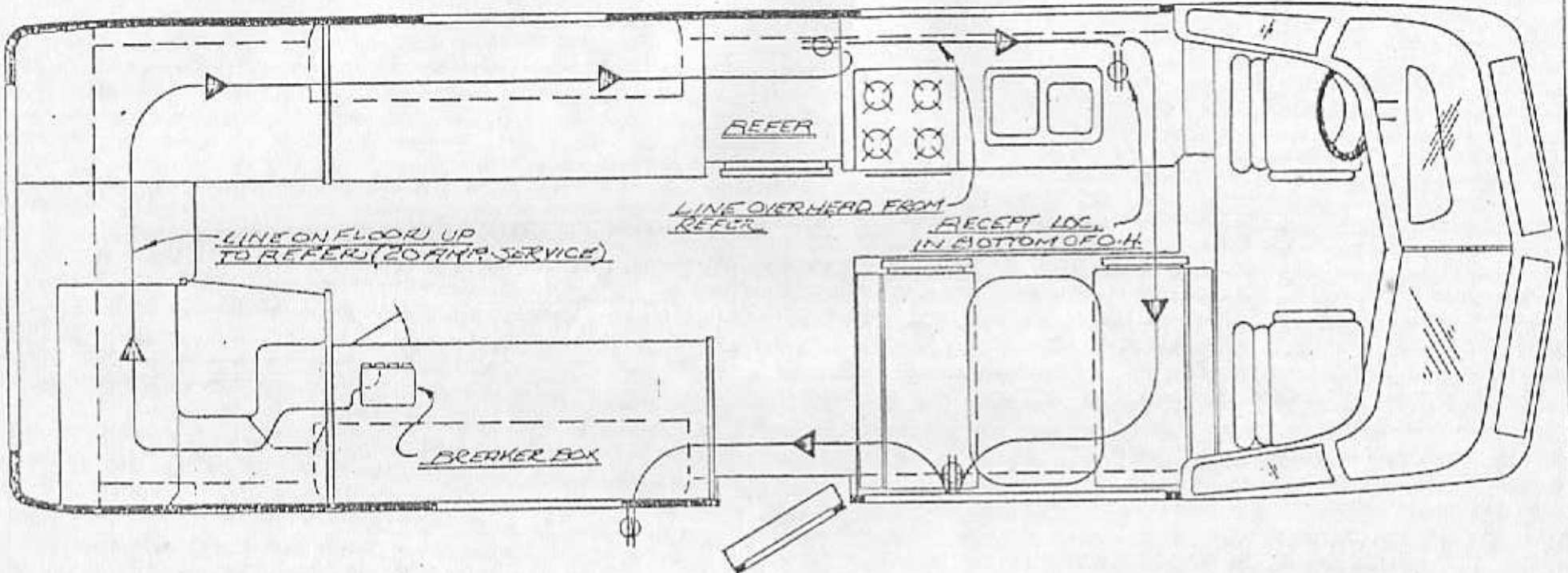
MONITOR PANEL
 GEN - RED, WHITE, BLUE, & GREEN
 W/P - BLUE
 L/P - RED
 HOLDING TANKS
 WATER TANKS

ELECTRICAL 12V.

COACHMEN INDUSTRIES, INC.

MODEL	23 SB TRANSMODE	DATE	4-29-76	DWG. NO.	J-EL-365
SUBJECT	MONITOR PANEL	SCALE	~	SHEET	2
				OF	2
				DWG. BY	GRIFFIN
				APPD. BY	(initials)

SYM	REVISIONS	CHANGE NO.	DATE	BY	SER.	THRU



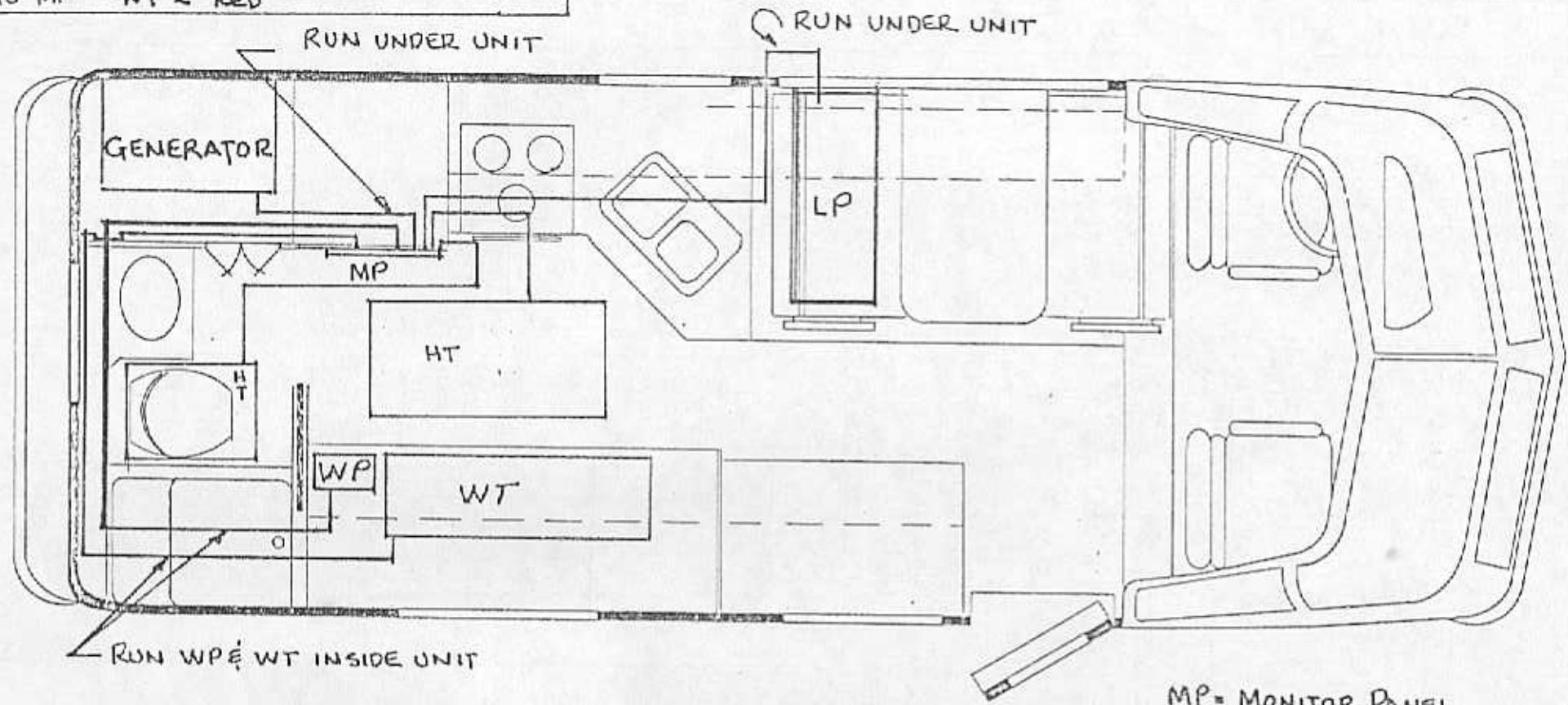
⊕ INTERIOR RECEPT 110V. 12-2 WIRE
 ⊖ EXTERIOR RECEPT W/GROUND FAULT 110V. 12-2 WIRE

MAIN IS 10-2 110V.

COACHMEN INDUSTRIES, INC.

						MODEL	26 RB TRANS MODE	DATE	9-4-75	DWG. NO.	RBEL-261000				
						SUBJECT	110V. ELECTRICAL LINE 1	SCALE	~	SHEET / OF	1 / 2	DWG BY	S. STOVOK		
						CHARGE NO.		DATE		BY		THRU.		APPO. BY	

CIRCUIT 5 MP ~ GREEN
 TO MP GEN ~ RED, WHITE, BLUE & GREEN
 TO CONV. WP ~ BLUE (AMP LOAD ~ T.O)
 TO CONV. LP ~ RED
 TO MP HT ~ BROWN & GREY
 TO MP WT ~ RED



NOTE:
 HOLDING TANK HARNESS RUN
 STRAIGHT THRU FLOOR.

MP = MONITOR PANEL
 WP = WATER PUMP
 WT = WATER TANK
 HT = HOLDING TANK
 LP = LPGAS TANK

COACHMEN INDUSTRIES, INC.

MODEL	23RB TRANSMODE	DATE	11/10/77	DWG. NO.	J-EL-240
SUBJECT	MONITOR PANEL 12V	SCALE	NONE	SHEET	DWG BY
				OF	W. SARASON

SYM	REVISIONS	CHANGE NO.	DATE	BY	SER	THRU.	APPD. BY
-----	-----------	------------	------	----	-----	-------	----------

ALTERNATOR

GMC ISOLATOR

#3 (RED)

AUX. BATTERY

GMC 50AMP BREAKER

GMC RV BATTERY

GMC AUTO BATTERY

FRAME

#2 WIRE

FRAME

50 AMP BREAKER

FRAME

GENERATOR

50AMP FUSE @ FUSE PANEL (TRIAD - UTRAD)

FRAME

CONVERTOR

COACHMEN INDUSTRIES, INC.

MODEL 23' RB TRANSWIDE SB

DATE 3-22-77

DWG. NO. J-EL-922

SUBJECT WIRING SCHEMATIC FOR RV BATTERY SYSTEM

SCALE NONE

SHEET 1 of 1

DWG BY JOHN V. SIENICKI

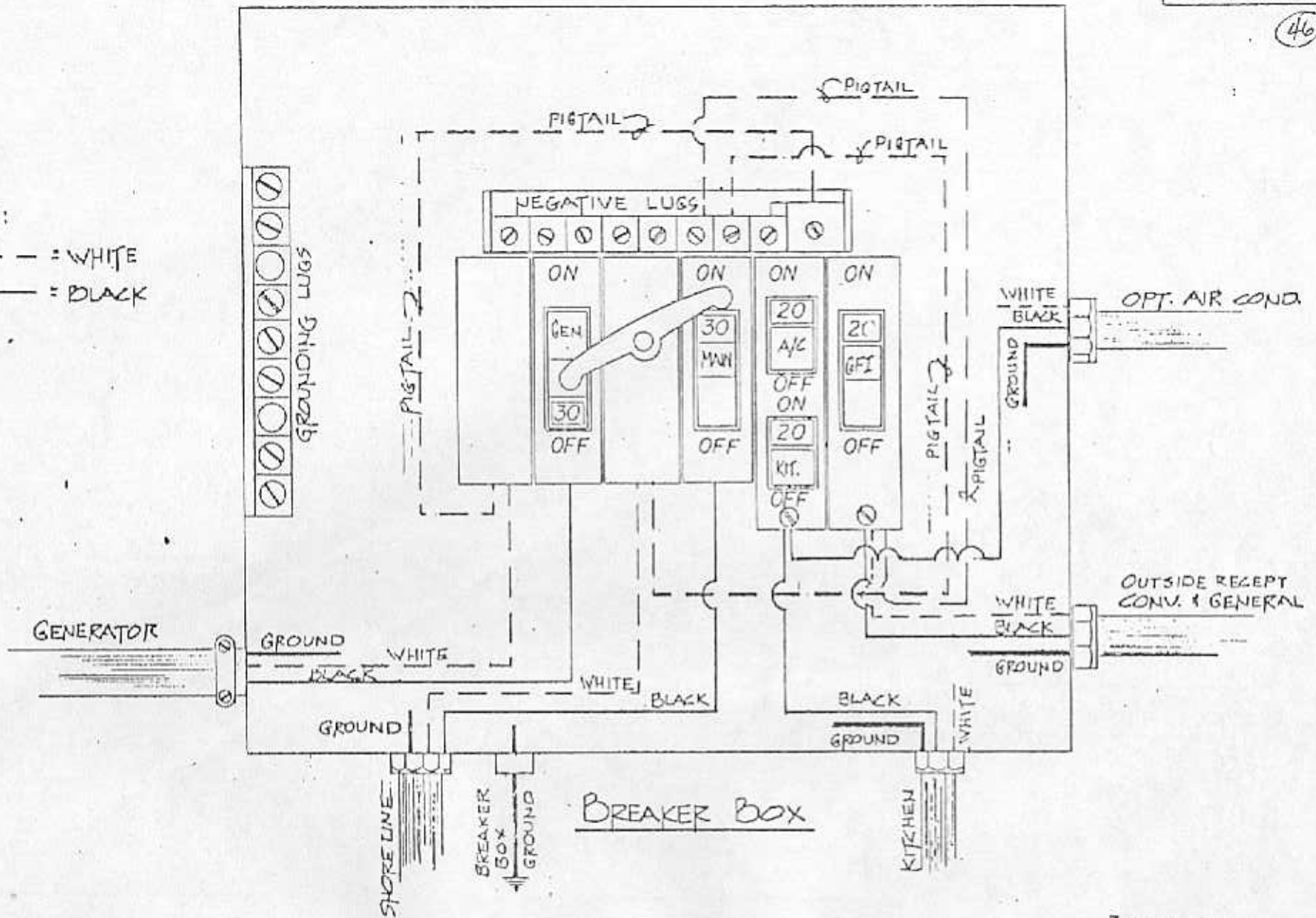
CHANGE NO. DATE BY

SER. NO.

THRU

APPD. BY

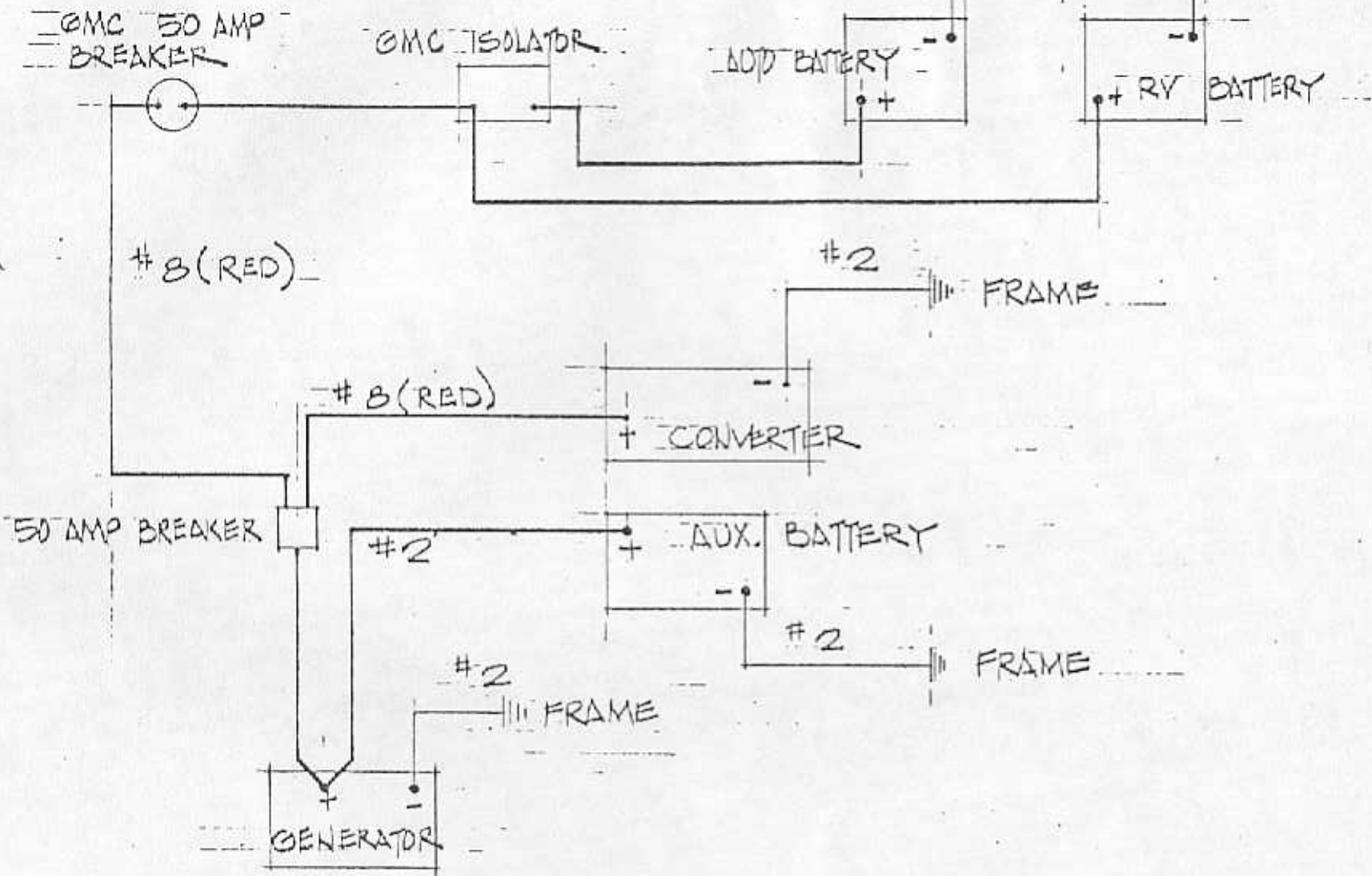
NOTE:
 - - - = WHITE
 ——— = BLACK



ELECTRICAL

COACHMEN INDUSTRIES, INC.

				MODEL ALL TRANSMODE MODELS		DATE 3-8-76	DWG. NO. J-EL-279	
				SUBJECT BREAKER BOX WIRING		SCALE NO SCALE	SHEET 1	DWG BY GRIFFIN
SYM	REVISIONS	CHANGE NO.	DATE	BY	SER. NO.	THRU.	APPD. BY	



COACHMEN INDUSTRIES, INC.

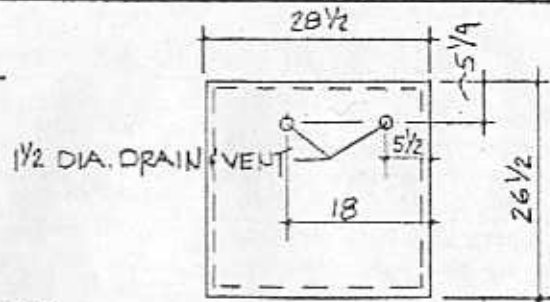
MODEL	26' RB/SB TRANSMODE	DATE	3-18-77	DWG. NO.	J-EL-921
-------	---------------------	------	---------	----------	----------

SUBJECT	WIRING SCHEMATIC FOR RV BATTERY SYSTEM	SCALE	NONE	SHEET	1	DWG BY	JIM V. STEINICKI
				OF	1		

23' SB TRANSMODE

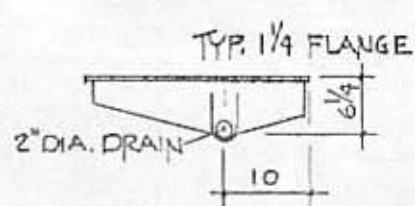
J-PL-268

①



+500200

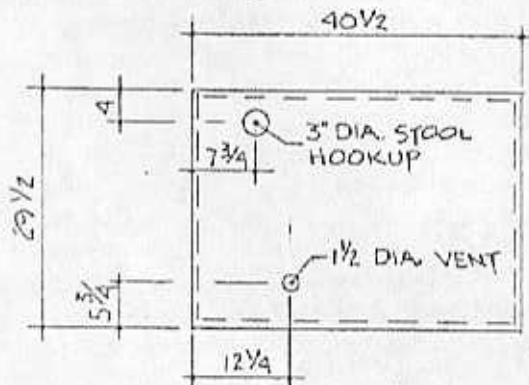
GRAYWATER
HOLDING TANK



11SDR

11 GAL.

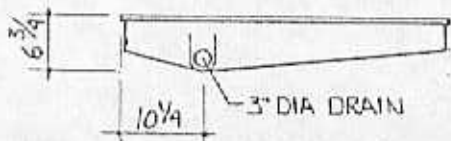
Verify Dimensions



WASTE HOLDING
TANK
16 GAL.

23 SB SDL

TYP. 1/4 FLANGE

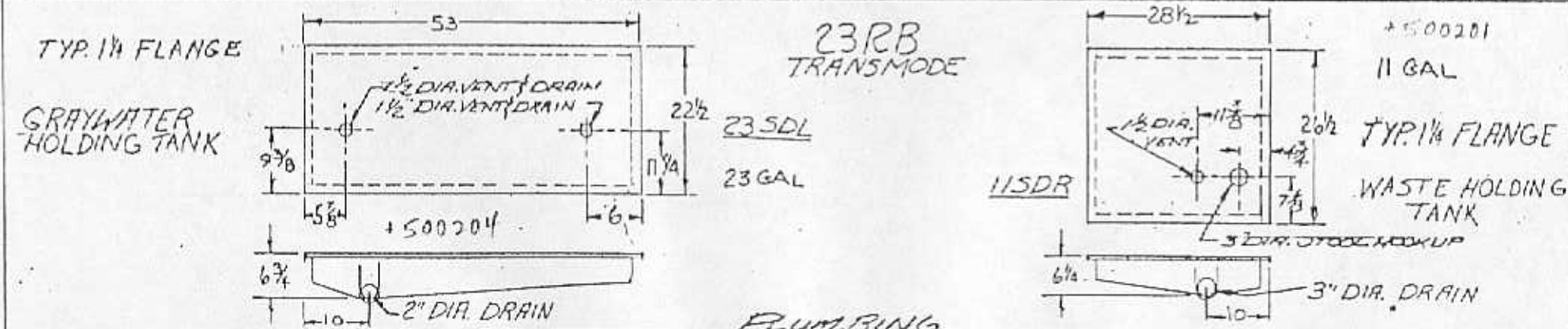
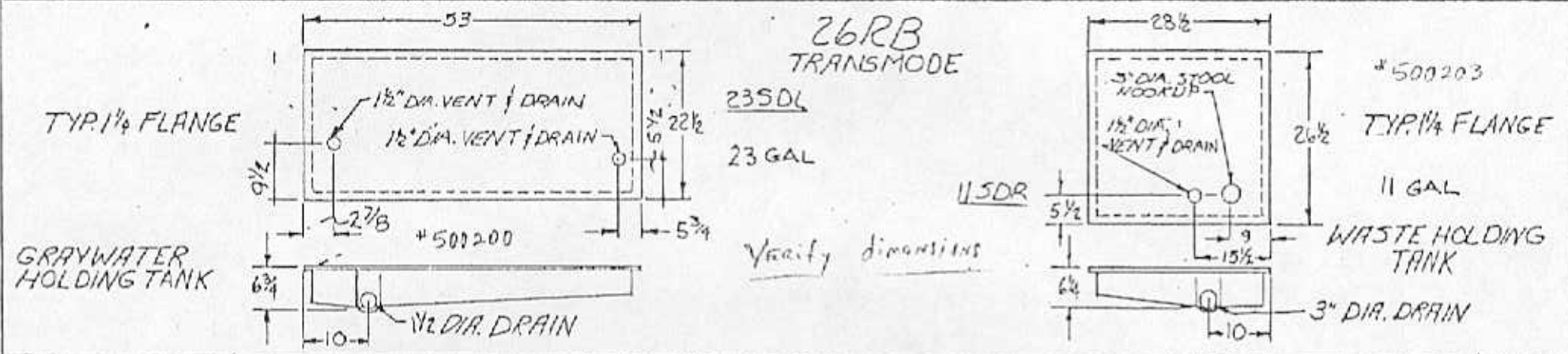
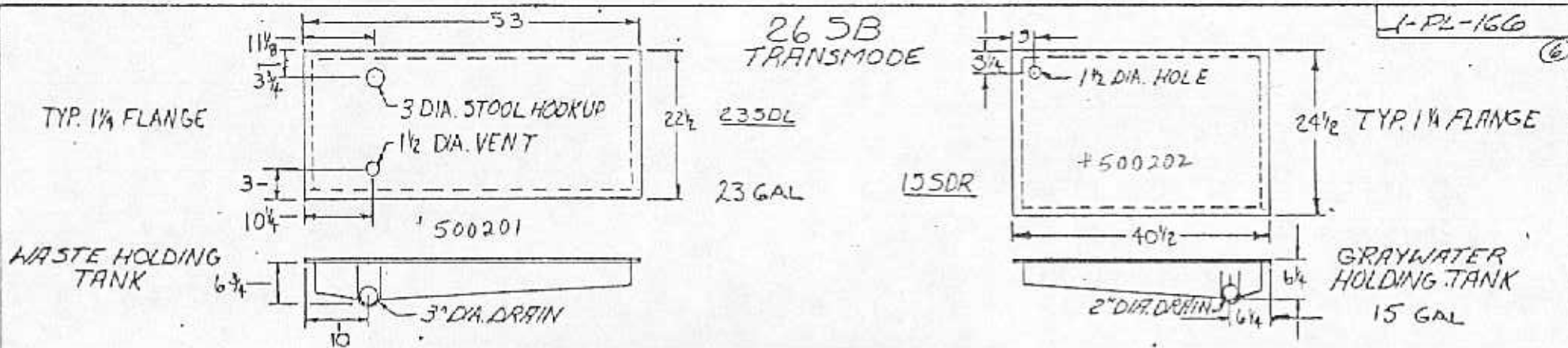


+510203

PLUMBING

COACHMEN INDUSTRIES, INC.

					MODEL 23' SB TRANSMODE			DATE 3-3-76	DWG. NO. J-PL-268-A	
					SUBJECT HOLDING TANK			SCALE 1/2" = 1'-0"	SHEET 1 OF 1	DWG BY GRIFFIN
SYN	REVISIONS	CHANGE NO.	DATE	BY	SER. NO.	THRU	APPD. BY <i>HS</i>			
A.	NEW WASTE HOLDING TANK 40 1/2 x 29 1/2		4-28-76	W.L.G.						



PLUMBING

SYM	REVISIONS	CHANGE NO.	DATE	BY
D	REV. GRAYWATER HOLDING TANK FOR 23 RB & 26 RB		7-27-76	WG
C	REV. HOLE LOCATION IN GRAYWATER HOLDING TANK 23 RB TRANSMODE		9-8-76	WG
B	REV. 26 RB 11SDR 3 3/4 TO 5 1/2 & 5 5/8 TO 9 1/4		5-10-76	WG
E	CHG DRAIN FROM 2" TO 1 1/2 23SDL		1-5-76	WG

COACHMEN INDUSTRIES, INC.			
MODEL	265B, 26RB, 23RB TRANSMODE	DATE	11-14-75
SUBJECT	HOLDING TANKS	DWG. NO.	1-PL-166-E
SER. NO.		SCALE	1/2" = 1'-0"
THRU.		SHEET	1 of 1
		DWG BY	R. SARSON
		APPD. BY	1/8