



26-foot with Sequoia Interior

11 floor plans and 4



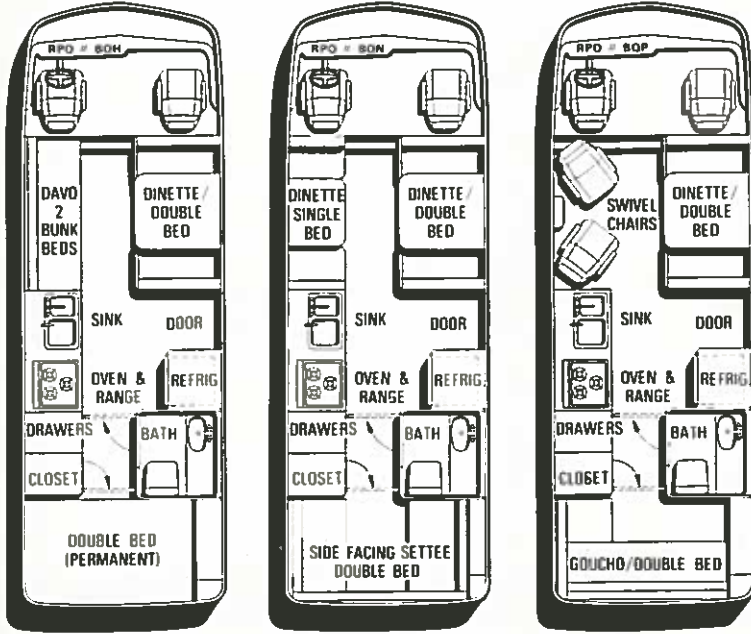
23-foot with Painted Desert Interior

4 floor plans and 4

The GMC 26' MotorHome offers custom-built home flexibility.

Not just one standard floor plan, but a variety of units you can tailor to fit your family or personal needs.

And you can do the furniture juggling without worrying about what it might do to ride or handling. We took a tip from aircraft designers and fed all the data on weights and locations into computers. Then we could determine what combinations would keep weight and balance within design limits.



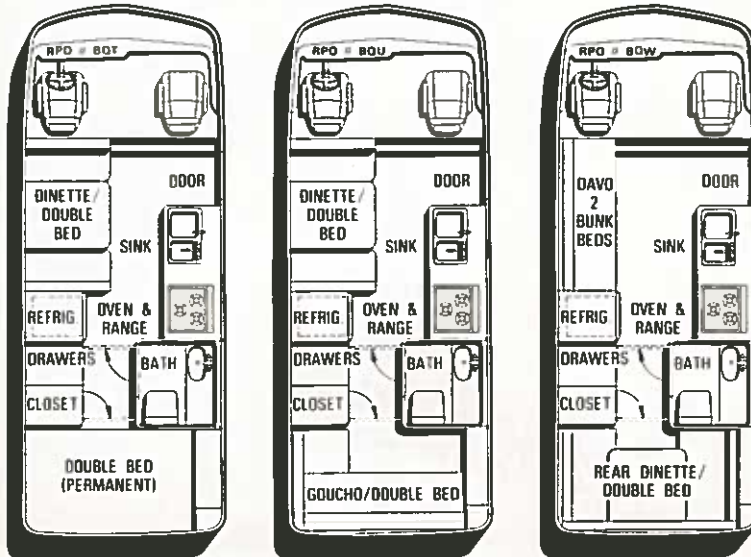
DETROIT PUBLIC LIBRARY
 NATIONAL AUTOMOTIVE HISTORY COLLECTION
 121 GRATIOT
 DETROIT, MICHIGAN 48228
 313-628-2851

The GMC 23' MotorHome has just about everything our 26' has, with something extra.

A lower price.

The 23' MotorHome has the same galley, the same stove and refrigerator, the same bath, the same cupboard and closet space... they're just moved around a little bit.

The furniture is the same high level as the 26' Home. You get the same luxurious, thick, polyfoam cushions; the same quality everywhere. All you miss is three feet. And that's not much of a sacrifice if you don't need the two extra bunks.



Even though it comes with all this,

Our basic MotorHome isn't very basic. Just some of the standard features are:

455 cu. in. V8 engine with 3-speed automatic transmission • front wheel drive • 6-wheel power brakes • power steering • independent air suspended tandem rear wheels with height control • dual 25-gal. fuel tanks • 44.5 lb. propane tank • 22,000 BTU ducted furnace with thermostat • 40-gal. water tank, pressure pump and 6-gal. electric water heater • 32-gal. holding tank • dual batteries with converter/charger • dual sink • 6 cu. ft. 12/110 volt refrigerator • 3-burner stove with oven • molded bathroom module with basin, medicine cabinet, shower and marine-type toilet • front and rear bumper systems.

you might want some of these.

This partial list of available equipment will give you an idea how much extra comfort you can add:

Automotive air conditioning • dark tinted side and rear windows (Softray) • spare tire and carrier • 80 amp. alternator • campsite power leveler • 4000W or 6000W generator • AC/DC converter • 62 lb. propane tank • TV antenna • water purifier • waste disposal system • chemical recirculating toilet • refrigerator (6 cu. ft. gas/electric), (7 cu. ft. two-door gas/electric) or (7.5 cu. ft. two-door all electric AC/DC) • four-burner range with bi-fold top, glass door oven and sink cover cutting board • LPG furnace (30,000 BTU) • air conditioning (roof mounted 13,500 BTU, 110V AC) • stereo tape deck and more.

One-stop service. After-hour assistance.

Your GMC MotorHome dealer services everything he sells. Inside and out. From the engine to the air conditioner and furnace. And there's a toll-free number you can call and get the number of the nearest MotorHome dealer representative available for after-hour assistance.



The MotorHome from General Motors

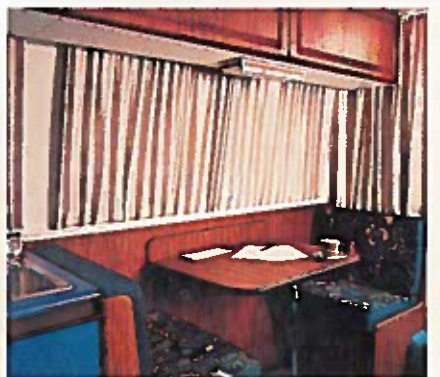
GMC Truck & Coach Division reserves the right to make changes at any time without notice in prices, colors, materials, equipment, specifications and models and also to discontinue models. Data shown is basic information for the prospective buyer effective at time of issuance of this pamphlet. Dealer will provide complete up-to-date information on available equipment, specifications, etc., not shown here.

KR

Burlington Municipal Beach
Burlington, Vermont

FILE COPY
PATENT LIBRARY
MVMA - DETROIT
1974 G 508e
YEAR CODE BOX

RECEIVED BY
M.V.M.A.
FEB 23 1974
PATENT RESEARCH





CHICAGO AUTO SHOW

FEB 23 1974

The GMC MotorHome. It doesn't ride like a truck. It doesn't look like a box.

Before we started building our MotorHome, we studied every other type of motorhome that exists.

We found that the simpler the basic construction, the fewer the problems. So we started with a strong, durable, steel member frame and attached to this a cage of heavy aluminum ribs.

On top of this, we bonded both aluminum and fiberglass panels molded to a smooth finish. It's the same construction people are flying all over the world in.

Except now you'll be driving.

Then we sprayed the interior with a thick, rigid polyurethane foam for thermal insulation and noise suppression. Next we

assigned a three-man team to install each interior from start to finish. If that sounds like a return to old-fashioned pride of craftsmanship, you're absolutely right.

To give you excellent road performance, we installed a 455-cubic-inch V-8 engine up front and coupled it to a 3-speed Turbo Hydra-matic transmission. We coupled that to a front wheel drive unit with a 3 to 1 ratio and put it all on top of torsion bar springs and stabilizer bar.

With our low overall body weight, it all means getting up to highway speeds quickly. Excellent traction. Excellent weight distribution.

We took our basic construction and

raised it only 15 inches from the ground. This puts the center of gravity only 37 inches above the ground. For easy handling.

See the rear wheels. We put one behind the other for four reasons: To give you a wider base. More room inside. Greater stability than you'd have with dual wheels. And so we could place a special air spring between the two wheels to pass the bumps from one to the other instead of to you!

There's also a six-wheel braking system with power disc brakes up front and four large finned-drum power brakes in the rear, plus an available leveling device operated from the driver's compartment for parking on uneven ground.