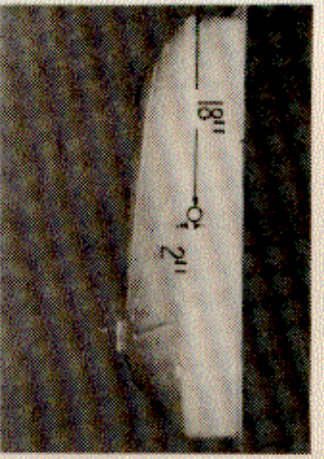


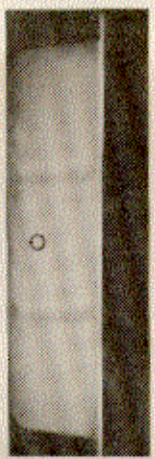
# EVACUATION PROBE INSTALLATION INSTRUCTIONS



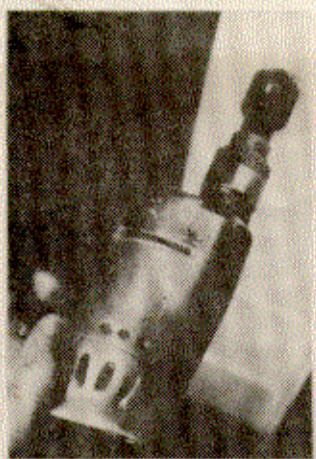
1. SELECT FLAT AREA ON SIDE OF TANK APPROX. 18 IN. FROM BACK AND 2 IN. FROM BOTTOM.

NOTE: PROBE MAY BE LOCATED ON BACK OF TANK (NEAR CENTER) IF SIDE NOT ACCESSABLE.

OPTIONAL



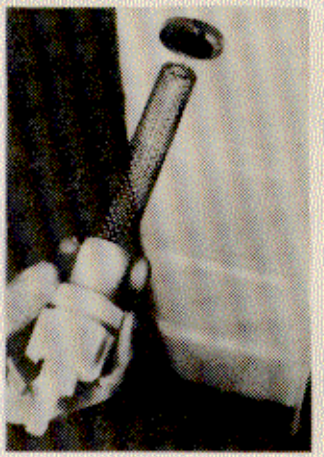
CAUTION: DO NOT LOCATE PROBE NEAR DUMP VALVE.



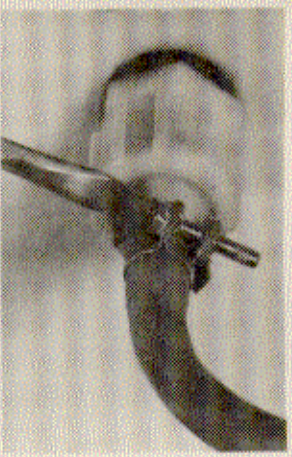
2. CUT A HOLE USING A 1-1/4 IN. HOLE SAW.



3. INSERT GROMMET.

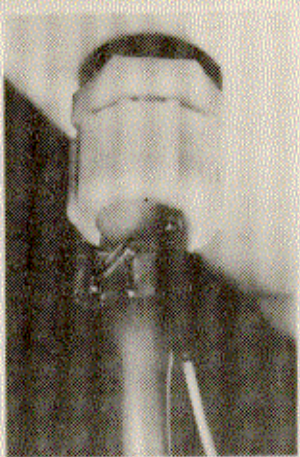


4. LUBRICATE GROMMET AND INSERT PROBE. TERMINALS MUST BE POSITIONED TOP AND BOTTOM.



5. INSTALL HOSE AND TIGHTEN CLAMP. CLAMP MUST NOT TOUCH TERMINALS.

NOTE: MODEL "B" PROBE DOES NOT HAVE TERMINALS.



6. PLUG YELLOW LEAD ONTO TOP TERMINAL.



7. PLUG BLACK LEAD ONTO BOTTOM TERMINAL.