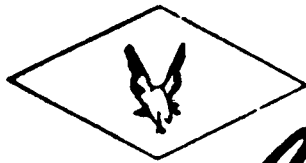


SERVICE MANUAL

WATER HEATERS

AMRS 6

MANUFACTURED BY



American APPLIANCE MFG. CORP.

Subsidiary of

MOR-FLO INDUSTRIES, INC.

2341 MICHIGAN AVENUE

SANTA MONICA, CALIFORNIA 90404

TELEPHONE: 213-829-1755

4th EDITION FEBRUARY 1977

66006

IMPORTANT WARNING

Make sure water heater is filled with water before power is turned on. Even momentary operation of heater without water in it will burn out the element.

NOTE: Always open both the cold and hot water faucets when filling vehicle water tank to allow air pockets to be forced out of the water heater. When water flows from the heater, close hot water faucet.

ELECTRICAL MAINTENANCE

Electric water heaters are designed to operate with a minimum amount of service problems and with proper operation and care can be expected to outlast other types of water heaters similar in size.

The most common trouble with electric water heaters results from energizing the heater before it is filled with water. Even momentary operation of the heater without water in it will burn out the heating element and render the heater inoperative.

If the heater is full of water (check this by running water from the hot water faucet) and the water fails to heat, always check the following items before requesting service or parts:

1. Check incoming power to make sure 110 volt electricity is coming into the coach.
2. Check the circuit breaker in the coach to make sure it has not kicked out.
3. Then remove the water heater door cover and press the red reset button on the heater (NOTE: POWER SHOULD BE TURNED OFF WHEN REMOVING THE DOOR COVER).
4. If, after pressing the reset button and turning the power back on, the heater still fails to operate, the power should be turned off and all wires and connections should be checked to make sure they have not come loose.
5. After the first four steps have been followed, the heating element should be checked for continuity with an amprobe or other testing device. If the element is defective it can be replaced with any other 110 volt element of the same or lower wattage as shown on the water heater instruction decal, provided of course, its mounting holes and gasket will adapt to the element mounting bracket on the water heater.

Secondary problems with electric water heaters are rare; however they can often be corrected by minor thermostat adjustments. Thermostats are set at 150° at the factory. If the water becomes too hot and kicks off the reset control, reset by pressing the red reset button.

In cases where the water seems too hot and the high limit control is not shutting off the heater, it is possible that the thermostat has worked loose from the holding bracket and it is not being held tightly against the tank. This condition can be detected and corrected by applying slight hand pressure to the thermostat.

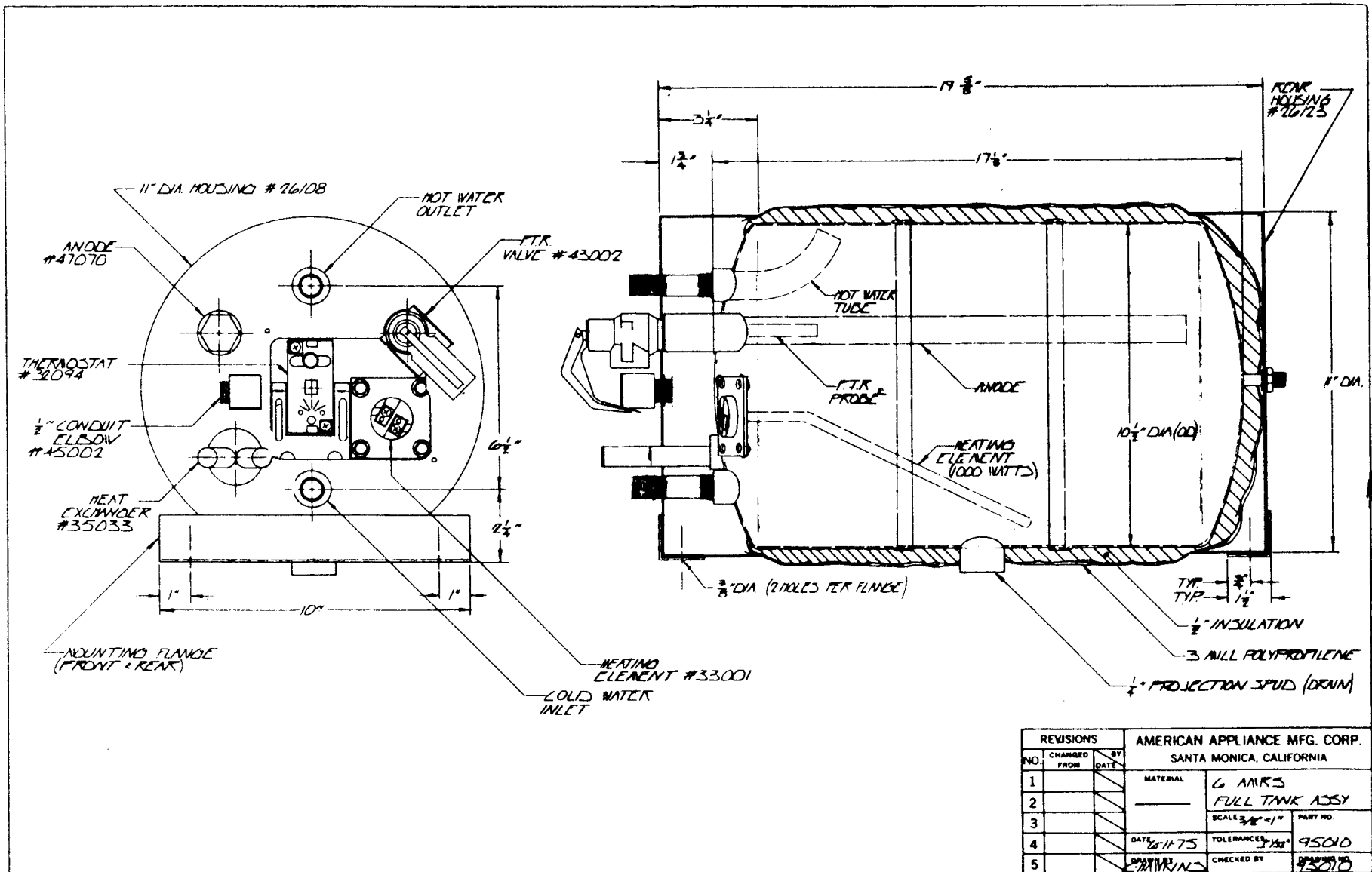
If the foregoing procedures are followed carefully it should rarely be necessary to seek outside service or parts. If service or parts is required, contact American Appliance Mfg. Corp. or any of the factory representatives listed in the manual, or return the defective parts to the factory for replacement.

TEMPERATURE AND PRESSURE RELIEF VALVE

The temperature and pressure relief valve is designed to open if the temperature of the water within the heater reaches 210 degrees, or, if the water pressure in the water heater reaches 125 lbs. Normally the water temperature will not reach the 210 degree setting. If your water heater is installed with a check valve between the water heater and the water supply (the usual installation in demand systems), the pressure in the water heater will normally reach 125 PSI during the heating cycles. In such cases the water will drip from the relief valve each time the water is heated. This is normal and does not indicate a defect in the relief valve.

MAINTENANCE OF "MOTOR-AID" HEAT EXCHANGER ON MODEL NO. AMRS

The "Motor-Aid" Heat Exchanger is designed to operate safely and efficiently for an indefinite period of time and should require no maintenance. Be sure to check your heater hoses for cracks after the first year of operation, since a cracked or broken hose could cause a great inconvenience on an outing.



American Appliance Mfg. Corp.
2341/2425 Michigan Ave.
Santa Monica, Calif. 90404

PARTS LIST FOR AMRS-6

<u>PART NO.</u>	<u>DESCRIPTION</u>	<u>PRICE</u>
47070	Anode Rod	\$ 9.25
92010	Tank - 6 Gallon	35.50
39033	Thermostat Bracket	.80
32094	Thermostat WIMI	13.75
33001	Element	15.65
44011	Element Gasket	.60
43002	P.T.R. Valve	8.00
26108	Control Housing (Front)	3.85
26104	Access Door	1.05
26123	Rear Housing	2.25
35033	Motor Aid	8.35
45002	1/2" Conduit Elbow	1.35
41062	1" X 1/2" BMC Washer	.62
41063	Tinnerman Nut	.48

When ordering parts be sure to specify the model number, service number, part number and the name of part requested. All parts not covered by warranty (Note: Warranty covers mechanical parts for a period of one year only) will be shipped C.O.D. Prices effective April 27, 1976. All prices subject to change without notice.



American APPLIANCE MFG. CORP.

Subsidiary of

MOR-FLO INDUSTRIES, INC.

2341 MICHIGAN AVENUE

SANTA MONICA, CALIFORNIA 90404

TELEPHONE: 213-829-1755